

## **WRIA 9 WEF Meeting**

May 9, 2019

### **WRIA 9 Organization, Management Committee Membership, and Leadership Positions**

#### **Provisions of the WRIA 9 ILA regarding the WEF:**

“The WRIA 9 Watershed Ecosystem Forum (WEF) referred to herein is the cooperative body comprised of the designated representatives of the WRIA 9 ILA Parties and a balance of Stakeholder representatives and any other persons who are deemed by the Parties to this Agreement to be appropriate members for the implementation of the Salmon Habitat Plan. The WRIA 9 Watershed Ecosystem Forum shall be an advisory body responsible for making recommendations for implementing the Salmon Habitat Plan including substantive plan amendments recommended as a result of adaptive management or other changed conditions.”

#### **Key functions and commitment estimates of WEF Co-Chairs:**

The Co-Chairs of the WEF: (1) rotate chairing four quarterly meetings of the WEF; (2) coordinate with the WRIA 9 Salmon Recovery Manager on a regular basis; (3) prepare, review, and approve correspondence on behalf of the WRIA 9 WEF; (4) participate in four quarterly meetings of the Management Committee; (5) coordinate with the Management Committee Chair on administrative issues; and (6) periodically attend other partner meetings and workshops.

Rotate chairing four quarterly meetings of the WEF	10 hours/year
Coordinate with the WRIA 9 Salmon Recovery Manager on a regular basis	18 hours/year
Prepare, review, and approval correspondence on behalf of the WRIA 9 WEF	20 hours/year
Participate in four quarterly meetings of the Management Committee	12 hours/year
Coordinate with the Management Committee Chair on administrative issues	8 hours/year
Periodically attend other partner meetings and workshops	20 hours/year
<b>Total number of hours per year</b>	<b>88 hours/year</b>

#### **Provisions of the WRIA 9 ILA regarding the Salmon Habitat Plan:**

“The Green/Duwamish and Central Puget Sound Watershed Water Resource Inventory Area 9 Salmon Habitat Plan (2005 Salmon Habitat Plan or Salmon Habitat Plan) is the plan developed by the WRIA 9 Watershed Ecosystem Forum and ratified by all of the parties to an interlocal agreement for its development and implementation. The Salmon Habitat Plan recommends actions that should be taken to protect and restore salmon habitat, using an ecosystem approach, in the Green/Duwamish and Central Puget Sound Watersheds. The Salmon Habitat Plan may

be amended from time to time according to the procedure in Section 6 herein and approved amendments shall be considered integral parts of the Salmon Habitat Plan. Efforts under the Salmon Habitat Plan are intended to complement habitat improvements in other parts of Puget Sound and hatchery and harvest actions to recover Puget Sound Chinook salmon, steelhead, and bull trout, and when implemented achieve multiple ecosystem benefits. The Salmon Habitat Plan constitutes a chapter of the Puget Sound Salmon Recovery Plan.”

**Provisions of the WRIA 9 ILA regarding the Management Committee:**

“The Management Committee as referred to herein consists of seven (7) elected officials or their designees. The seven officials of the Management Committee are chosen by the WRIA 9 ILA Parties, according to the voting procedures in Section 5 herein, charged with certain oversight and administrative duties on the WRIA 9 ILA Parties’ behalf.”

**Key functions and time commitments of the Management Committee Chair (and Vice-Chair):**

The Chair of the Management Committee: (1) prepares for and chairs four quarterly meeting of the Management Committee; (2) coordinates on a regular basis with the WRIA 9 Salmon Recovery Manager, other members of the WEF and Management Committee, and the Service Provider; (3) acts between quarterly meetings in coordination with others on issues that need timely response; (4) works closely with the Salmon Recovery Manager on both administrative/personnel and regional issues affecting WRIA 9; (5) prepares, reviews, and approves correspondence on behalf of the WEF; and (6) regularly attends local, regional, and state meetings and workshops.

Chairs four quarterly Management Committee meetings	32 hours/year
Coordinates regularly with the Salmon Recovery Manager and others	20 hours/year
Acts between quarterly meetings on issues needing timely response	20 hours/year
Works on administrative and regional issues	20 hours/year
Prepares, reviews, and approves correspondence	20 hours/year
Regularly attends meetings and workshops	20 hours/year
<b>Total number of hours per year</b>	<b>132 hours/year</b>

**Other pertinent provisions of the WRIA 9 ILA to the functions of the WEF and Management Committee:**

“The Parties to this Agreement serve as the formal governance structure for carrying out the purposes of this Agreement. Each Party to this Agreement except Tacoma shall appoint one (1)

elected official to serve as its primary representative, and one (1) alternate representative to serve on the WRIA 9 Watershed Ecosystem Forum. The alternate representative may be a different elected official or senior staff person. Tacoma's representative shall be the Tacoma Water Superintendent or designee, which designee shall be a senior staff position."

"Upon the effective execution of this Agreement and the appointment of representatives to the WRIA 9 Watershed Ecosystem Forum, the appointed representatives of the WRIA 9 ILA Parties shall meet and choose from among its members, according to the provisions of Section 5 herein, seven (7) officials or their designees, to serve as a Management Committee to oversee and direct the scope of work, funds, and personnel agreed to and contributed under this Agreement, in accordance with the adopted annual budget and work program and such other directions as may be provided by the WRIA 9 ILA Parties. Representatives of the Fiscal Agent and Service Provider may serve as non-voting ex officio members of the Management Committee. The Management Committee shall act as the executive subcommittee of the WRIA 9 ILA Parties, responsible for oversight and evaluation of any Service Providers or consultants, administration of the budget and work plan, and for providing recommendations on administrative matters to the WRIA 9 ILA Parties for action, consistent with other subsections of this section. The appointed representatives of the WRIA 9 ILA Parties shall consider new appointments or reappointments to the Management Committee every two years following its initial appointments." [See WRIA 9 ILA Organizational Chart at end of this document.]

**Provisions of the WRIA 9 ILA pertaining to Assessing the Service Provider:**

"The services cost-shared under this agreement shall be provided to the WRIA 9 ILA Parties and the Watershed Ecosystem Forum by the Service Provider, which shall be King County Department of Natural Resources and Parks, unless selected otherwise by the WRIA 9 ILA Parties. The Management Committee shall prepare a Memorandum of Understanding to be signed by a representative of the Service Provider, and the Chair of the WRIA 9 Management Committee., and this Memorandum of Understanding shall set out the expectations for services so provided. Services should include, without limitation, identification of and job descriptions for dedicated staff, description of any supervisory role retained by the Service Provider over any staff performing services under this Agreement, and a method of regular consultation between the Service Provider and the Management Committee concerning the performance of services hereunder."

## ATTACHMENT B WRIA 9 ILA Organizational Chart

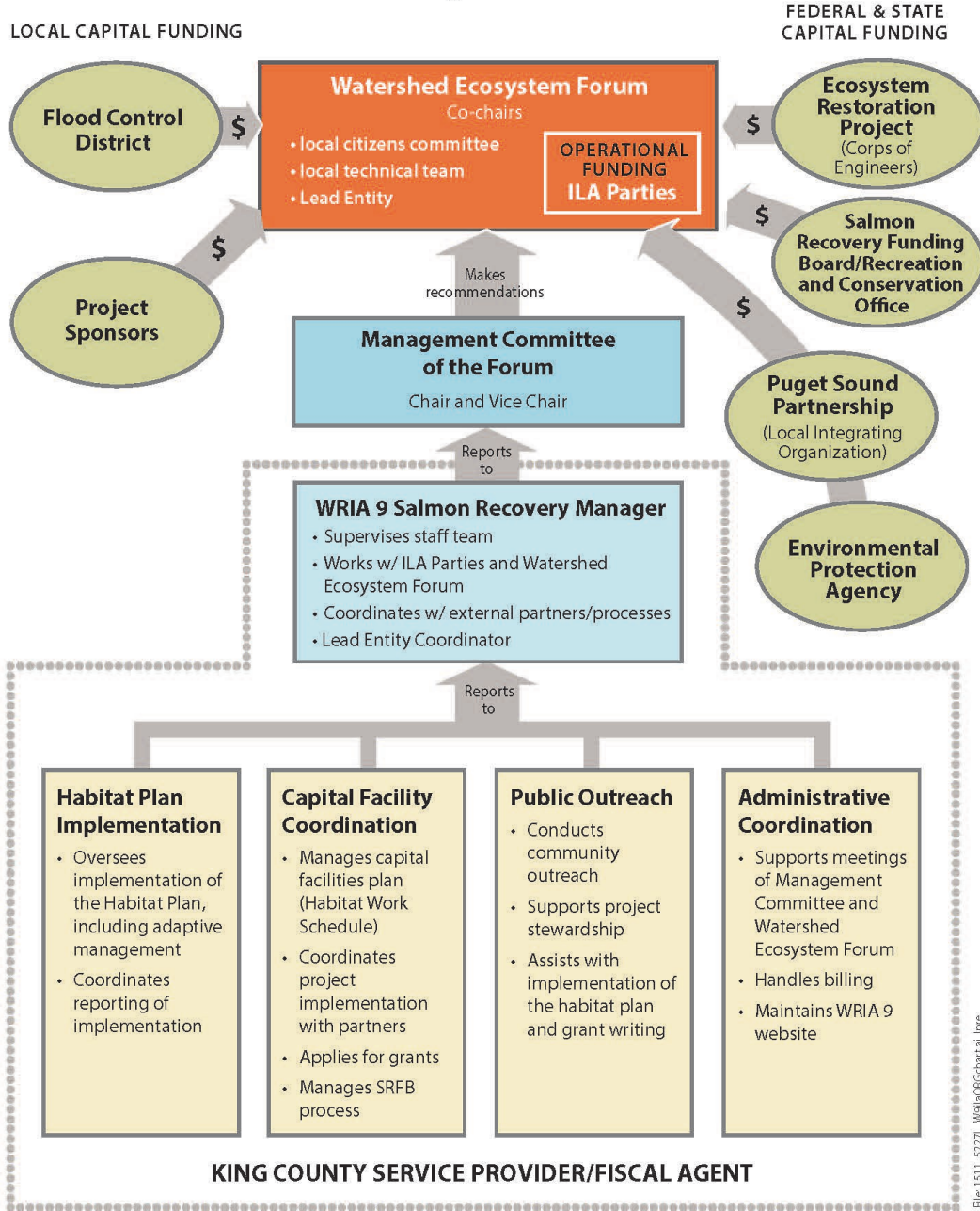


Chart indicates positions and selected tasks of 2016 WRIA 9 Scope of Work (Attachment A).