



Clean Water Healthy Habitat



Initiative Overview

March 18, 2021

WRIA 8

Salmon Recovery Council



Clean Water
Healthy Habitat

Clean Water, Healthy Habitat Vision:

Protect and restore the water and land that sustains all of us within a generation.

Briefing Objectives:

- Why are we doing this?
- Goals and measures
- Key principles and strategies
- Connection to salmon recovery



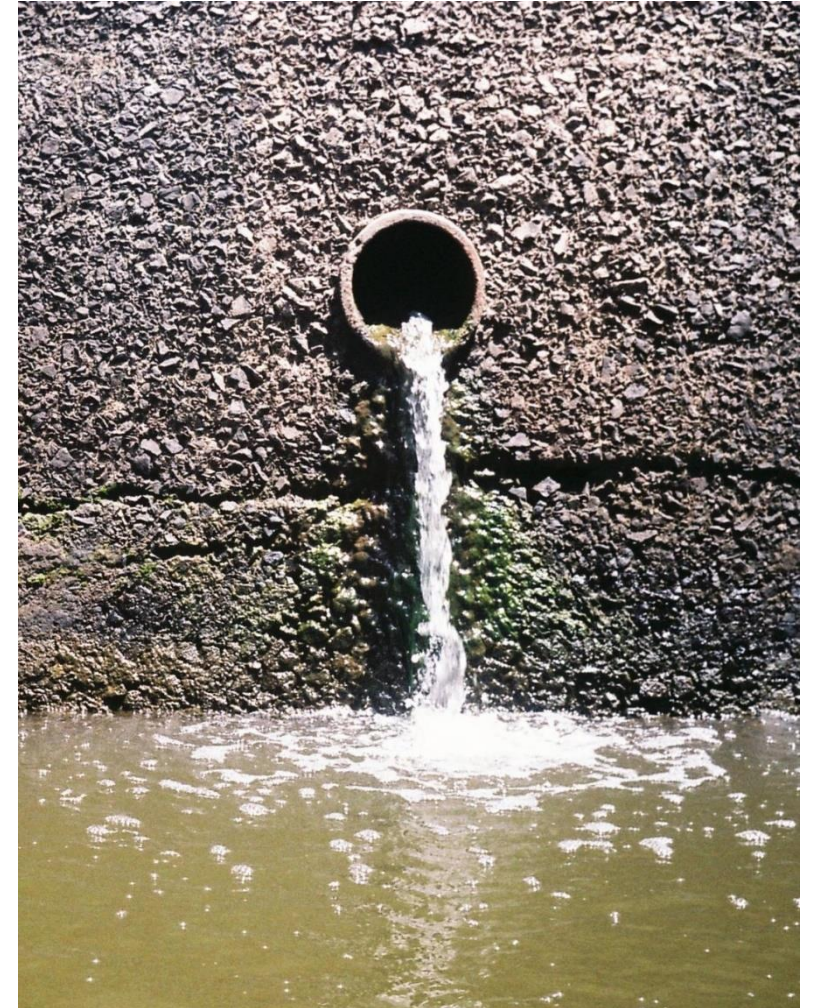
Funding and Outcomes



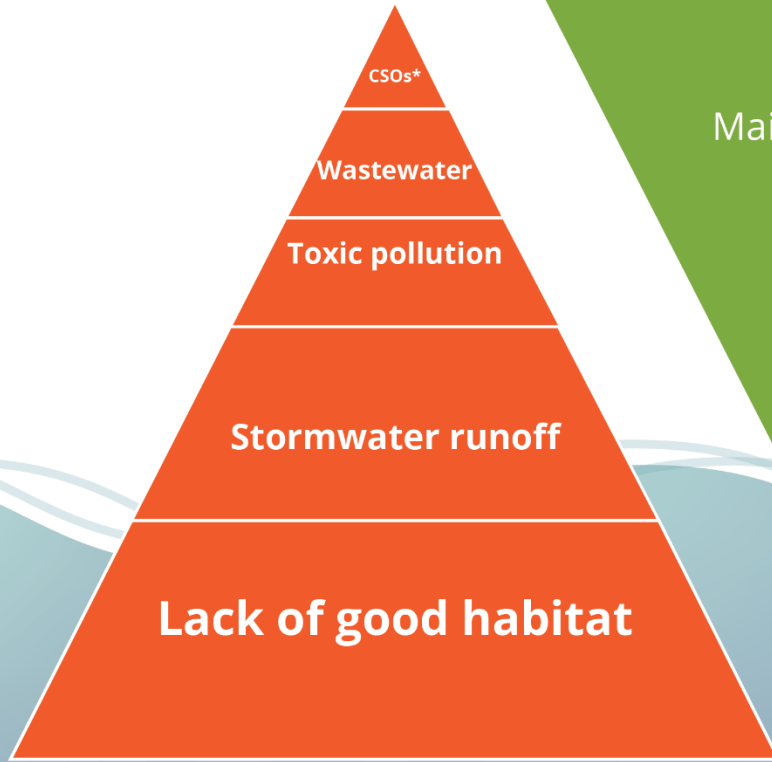
Clean Water
Healthy Habitat

Questions from Executive Constantine in 2018:

- *What are we currently investing in?*
- *What will that get us for outcomes? Are those investments on track to get us to our long-term goals?*
- *Are our investments equitable?*
- *What are we *not* investing in that is a priority?*

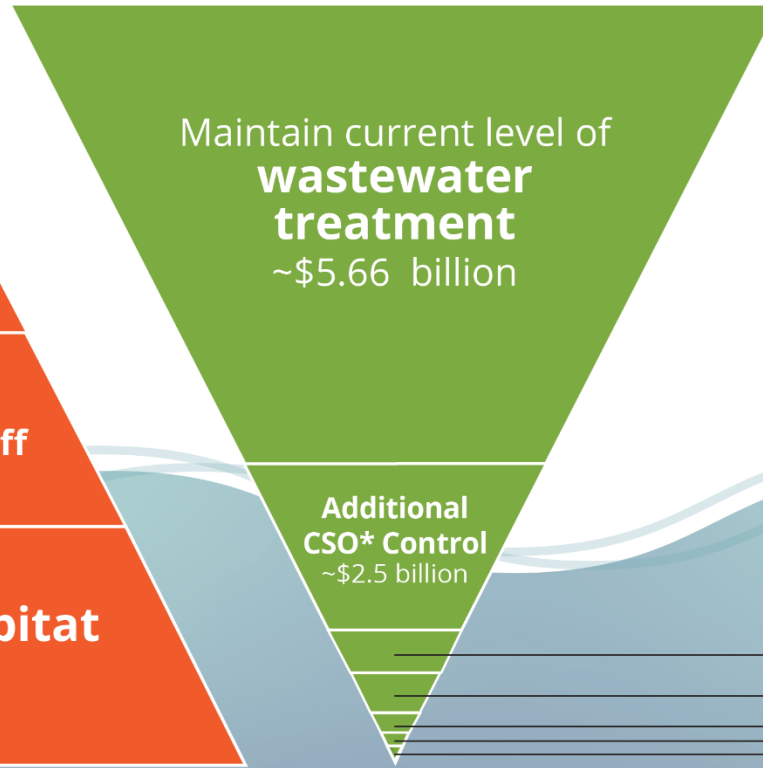


THREATS



*Combined Sewer Overflow

**PROJECTED 10-YEAR INVESTMENTS (\$9.5 Billion)—
LARGEST DRIVEN BY CURRENT REQUIREMENTS**



Habitat

(Restoration, open spaces, forestry/agriculture shorelines, watershed, fish passage, and land protection)
~\$548 Million

Stormwater management

~\$230 Million

Reduce ongoing sources of toxics

~\$127 Million

Habitat

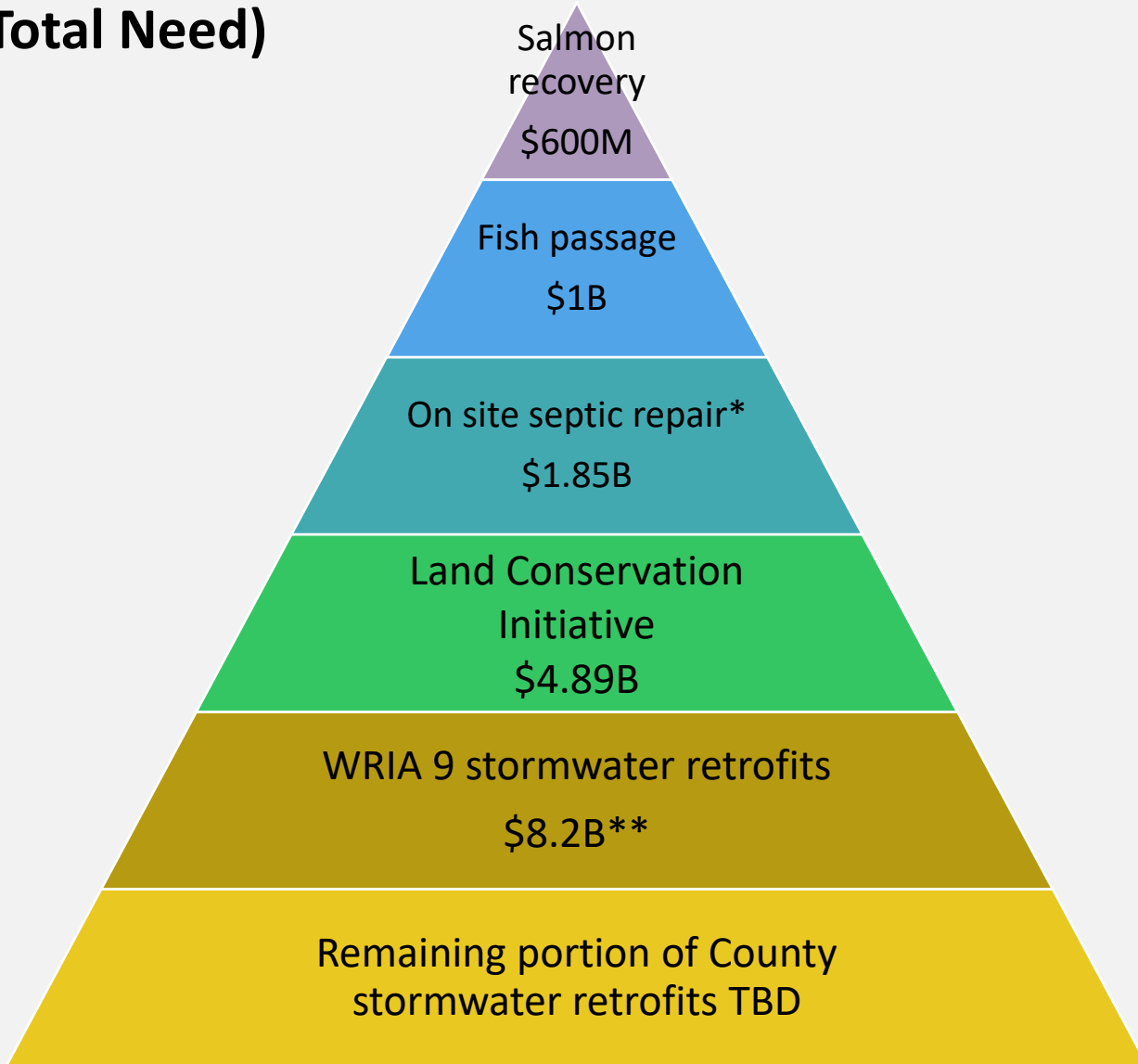
(Maintenance)
~\$382 Million

Toxics cleanup

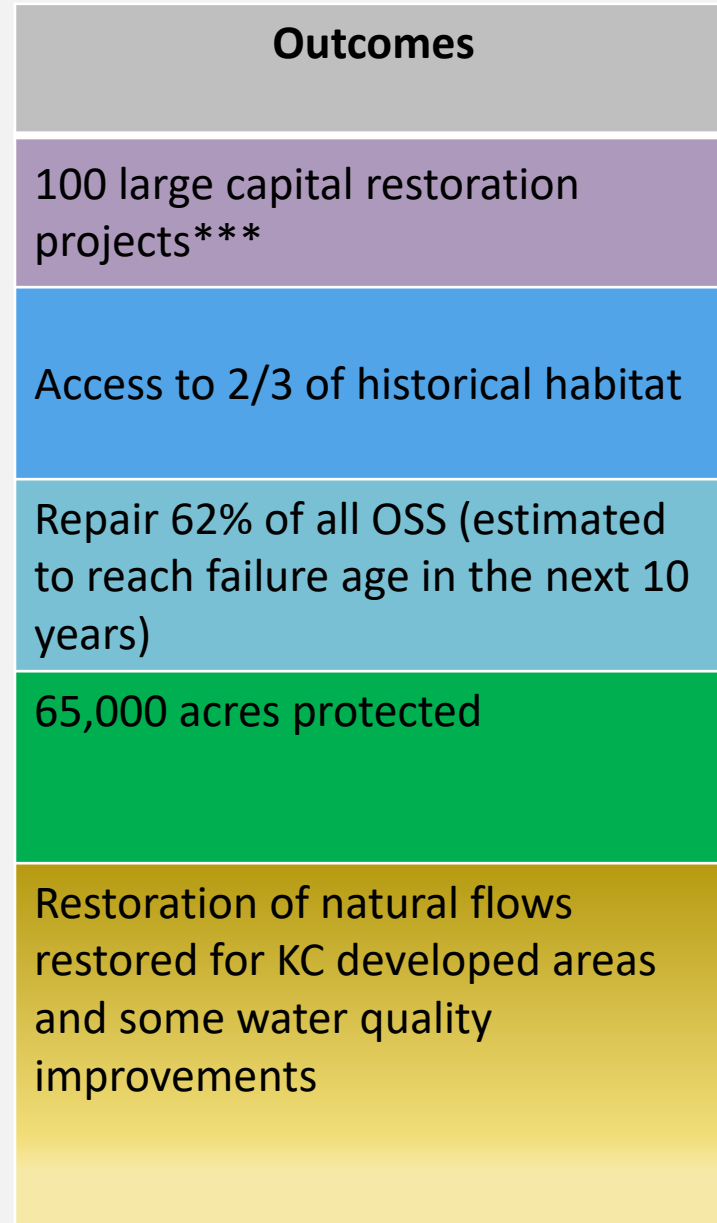
~\$36 Million

The right investments at the right time in the right places.

Unfunded in next 30 years (Total Need)



*62% of OSS expected to reach failure age in next 10 years, average cost of \$35K to repair systems ** 30-years of O&M



*** from WRIA capital plans

Goal Elements

Achieve the best environmental outcomes
Deliver benefits to people
Eliminate racial inequities in outcomes



- 2 measures for each goal
- Worked closely with WRIA staff to reflect salmon recovery priorities and other existing regional frameworks
- Over the next 5 years, programs will be asked to articulate their contribution to these goals and deliver on multiple goals where possible
- Changes in status will be reported in 2025

Connection to the Salmon Recovery



Strategies Overview

Organized by Principles from the Executive Order:

- Equitable Investments and Community Engagement
- Integration
- Systems Approach
- Innovation
- Outcome-driven Decision Making



Clean Water
Healthy Habitat



Strategies

Principle: Equitable Investments and Community Engagement

- One-King County community engagement
- **Community engagement and disparity data collection**
- Equitable contracting

Principle: Integration

- **Integrated capital planning (CPMWG) + monitoring**
- Natural asset management
- Organizational development for integration + multi-benefit funding source
- Integrated data platform + monitoring

Principle: Standardization and Systems Approach

- Add criteria to grants/incentives that reflect CWHH goals
- Update Green Building Sustainability Scorecard

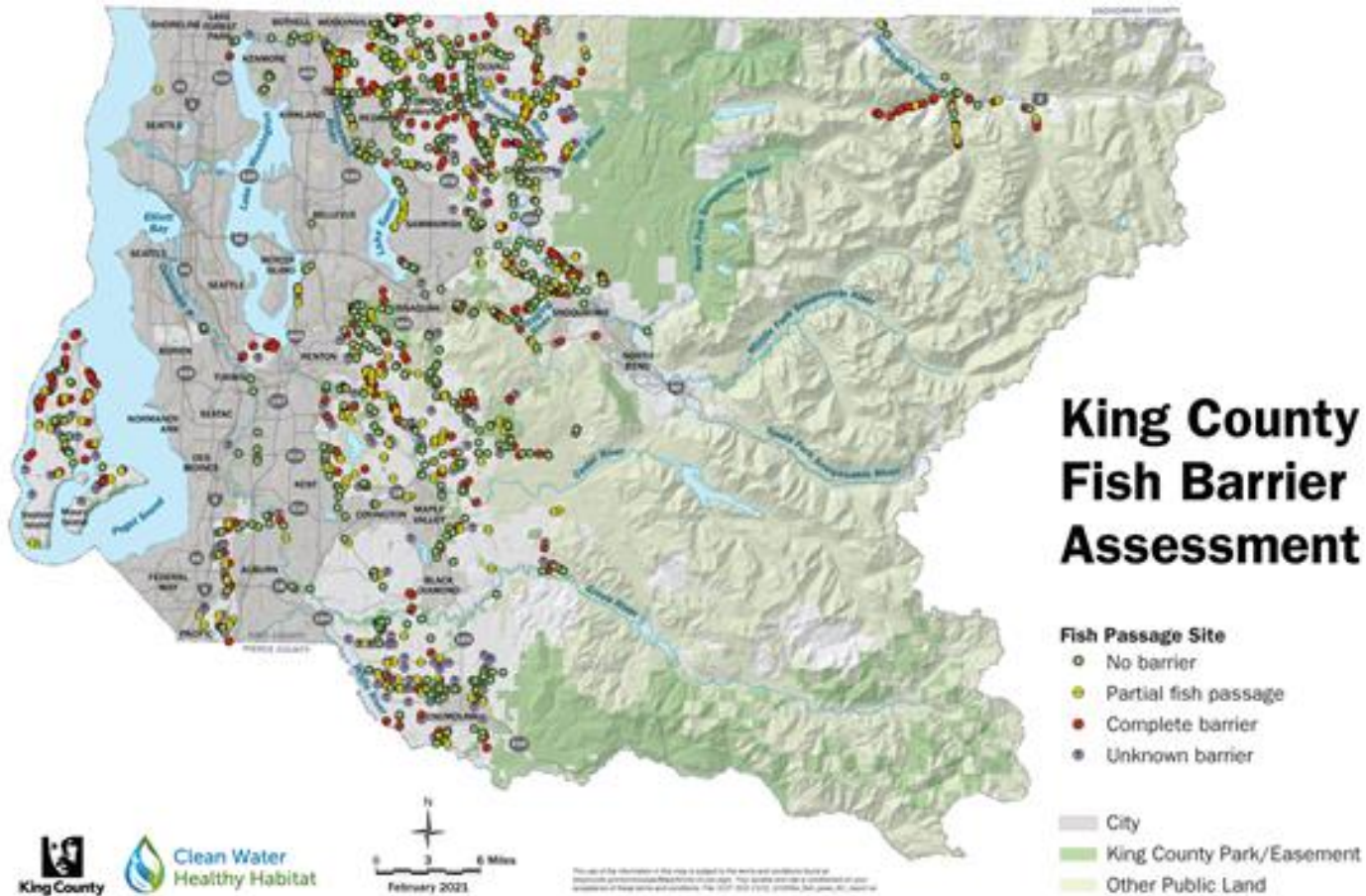
Principle: Innovation

- Develop an innovation panel
- **Innovative funding approaches**
 - Adjustments to existing governmental fund sources (CFT lift, bonding changes, etc.)
 - Expansion of ecosystem credit markets (wetlands, stormwater, carbon, etc.)
 - Goal driven private capital models

Principle: Outcome-driven decision making - regulations and policy

- **Explore regulatory alternatives for improved water quality and habitat outcomes**
 - CSO and stormwater
 - Fish passage approach
 - Nutrients
 - **Integrated floodplains - Fish Farm Flood**
- DNRP/DLS Strategic Planning and Coordination

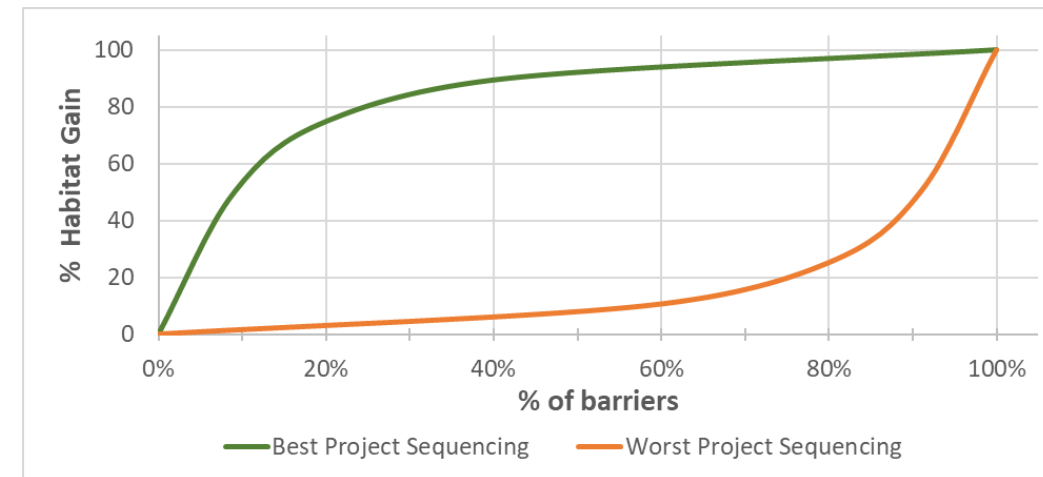
Example: Fish Passage



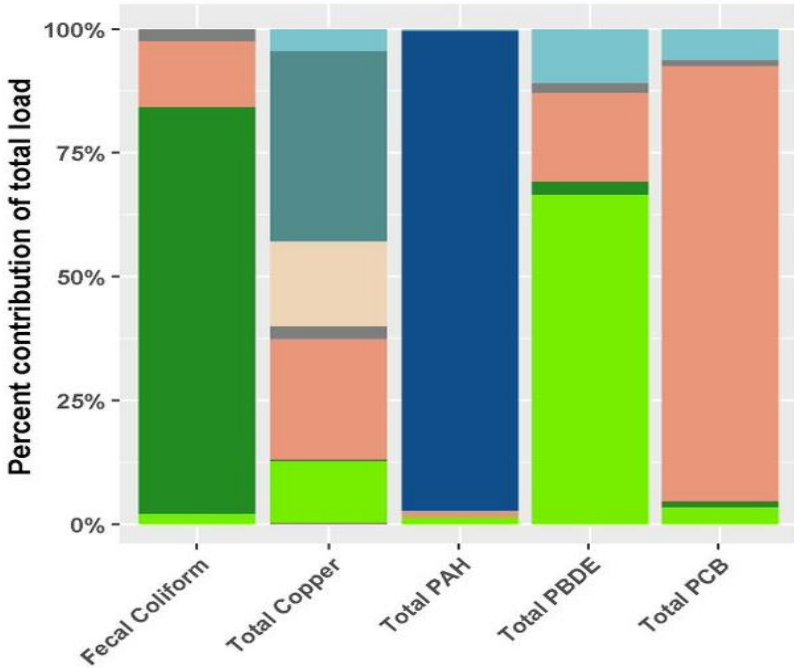
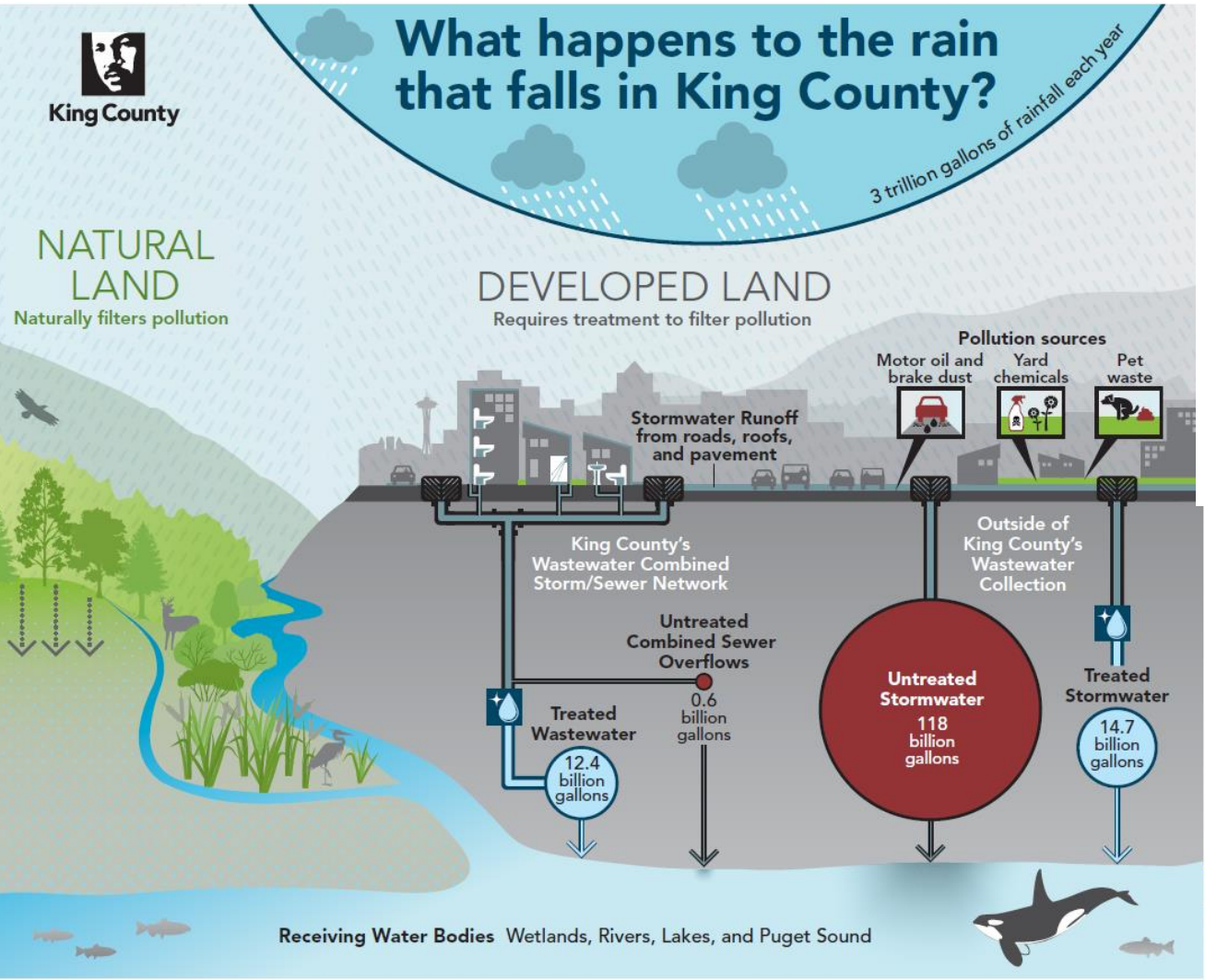
Key Principles:

Systems approach

Outcome-driven decision making



Example: Stormwater and WQBE



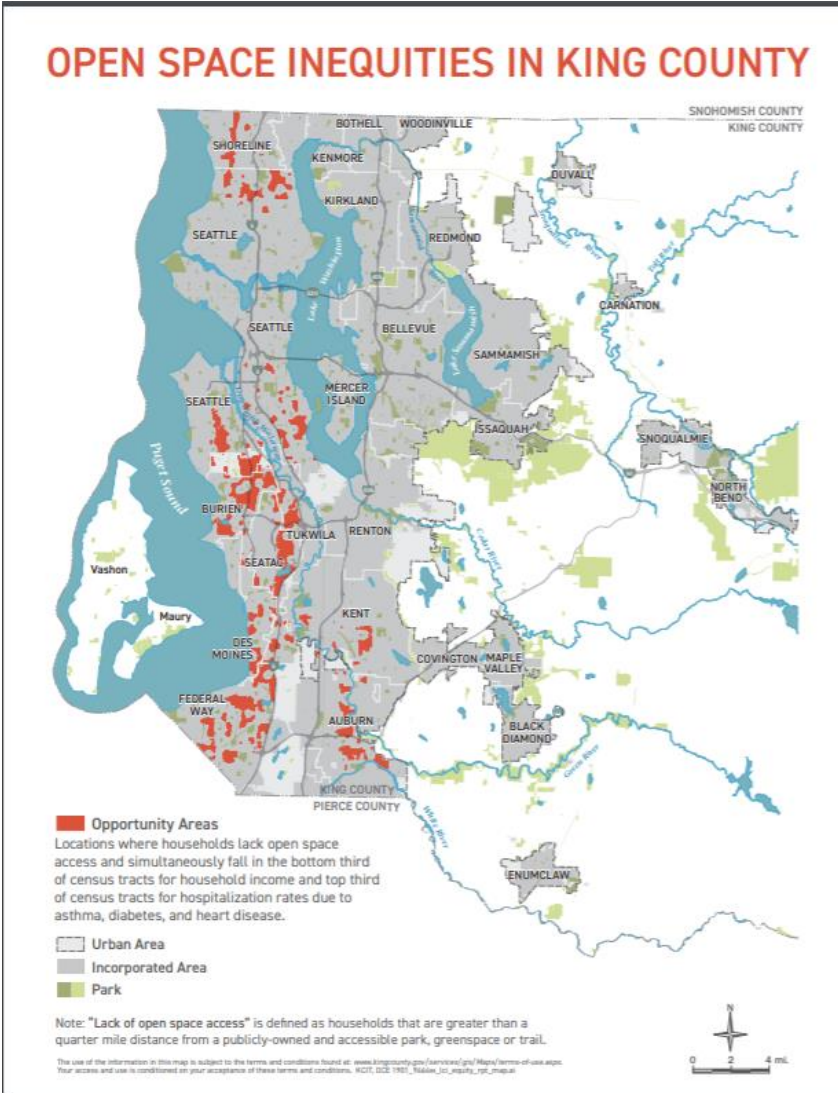
*Contaminated sites not included.

Preliminary findings. Technical review pending.

POTENTIAL PROJECTS AND PROGRAMS	LOAD REDUCTIONS			THREAT REDUCTIONS				
	Pollutant A	Pollutant B	Pollutant C	Edible fish	Swimming	Shellfish harvesting	Chinook salmon	Orca
Option A	●	○	○	○	●	●	○	○
Option B	○	●	○	●	○	○	●	●
Option C	●	○	●	●	○	●	●	●

SYMBOLS: ● High reduction ● Medium reduction ○ Low reduction

Example: Land Conservation Initiative



Key Principles:

Equitable investments

Innovation

65,000 acres have been mapped and prioritized within six land categories:

- URBAN GREEN SPACE**

Neighborhood green and open space to create more livable neighborhoods
- TRAILS**

Land to connect trails and communities to increase livability & inspire healthy living
- NATURAL LANDS**

Natural lands for wildlife, recreation, & resilience in an uncertain future
- RIVERS**

River corridors to sustain salmon and reduce flooding
- FARMLANDS**

Farmlands and community gardens for healthy local food
- FORESTS**

Forestlands to support clean air, clean water, cooler summers, and recreation.

Partner Engagement 2021



Information to be released and reviewed

- Presented at Puget Sound Partnership Leadership Council on February 18th
- Water Quality Benefit Evaluation results will inform Clean Water Plan and Stormwater Investment Plan
- Fish passage inventory and prioritization will inform habitat approaches with co-managers
- Building on experience of partnership and multi-benefit work done through salmon recovery councils

