

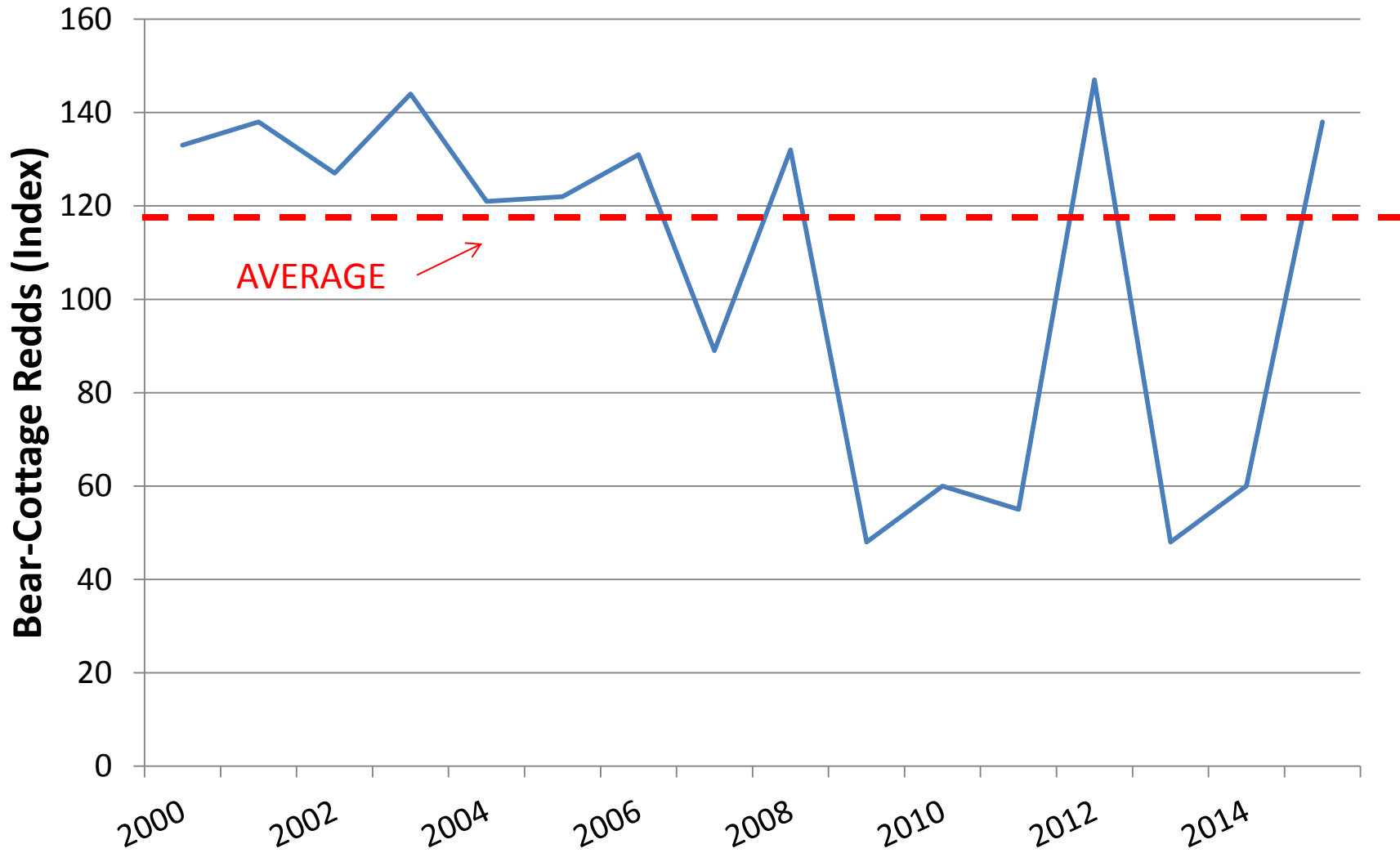
Lake Washington/Cedar/Sammamish Watershed (WRIA 8)



Fish In Monitoring Summary

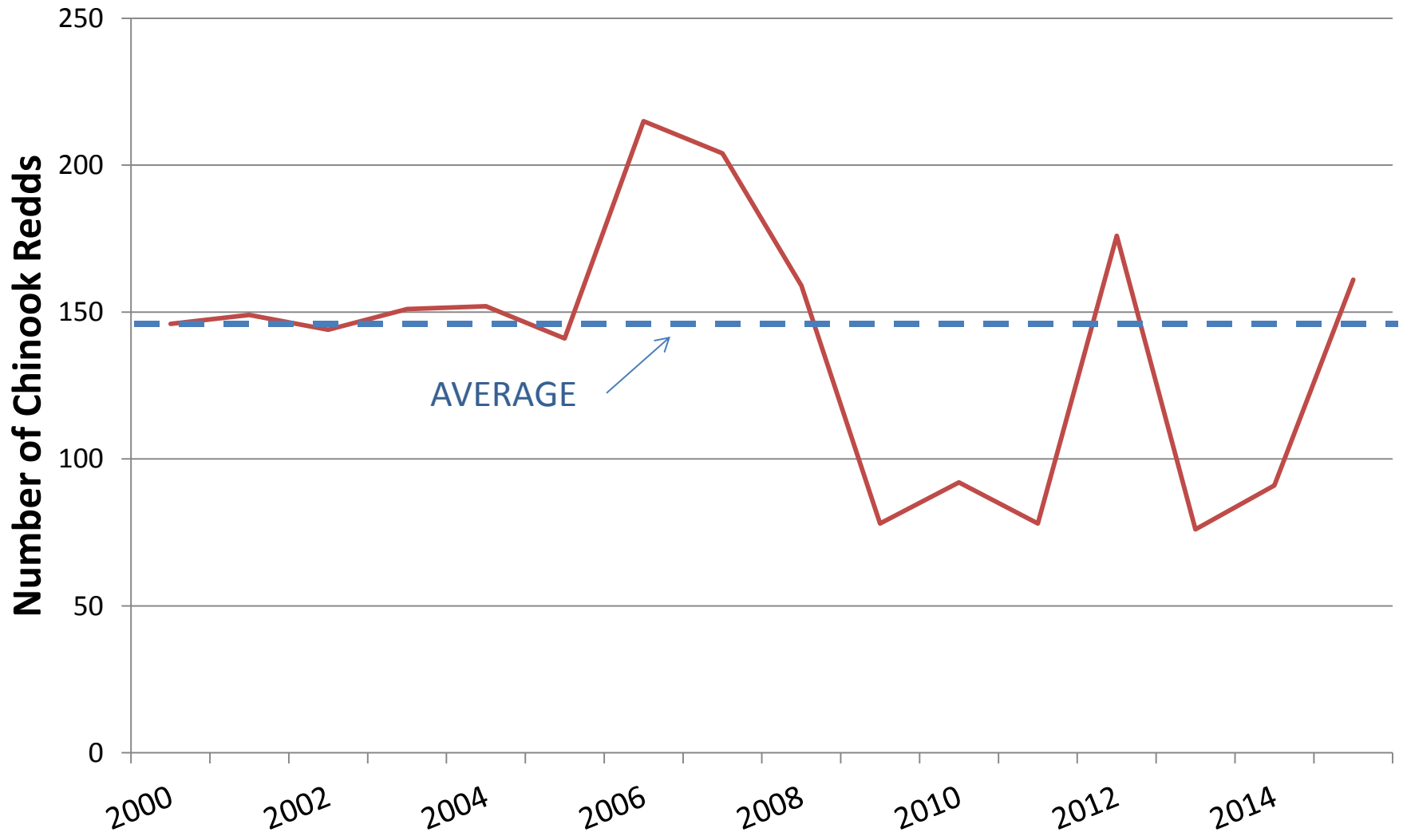
November 19, 2015

Bear-Cottage Redds, 2000-2015*



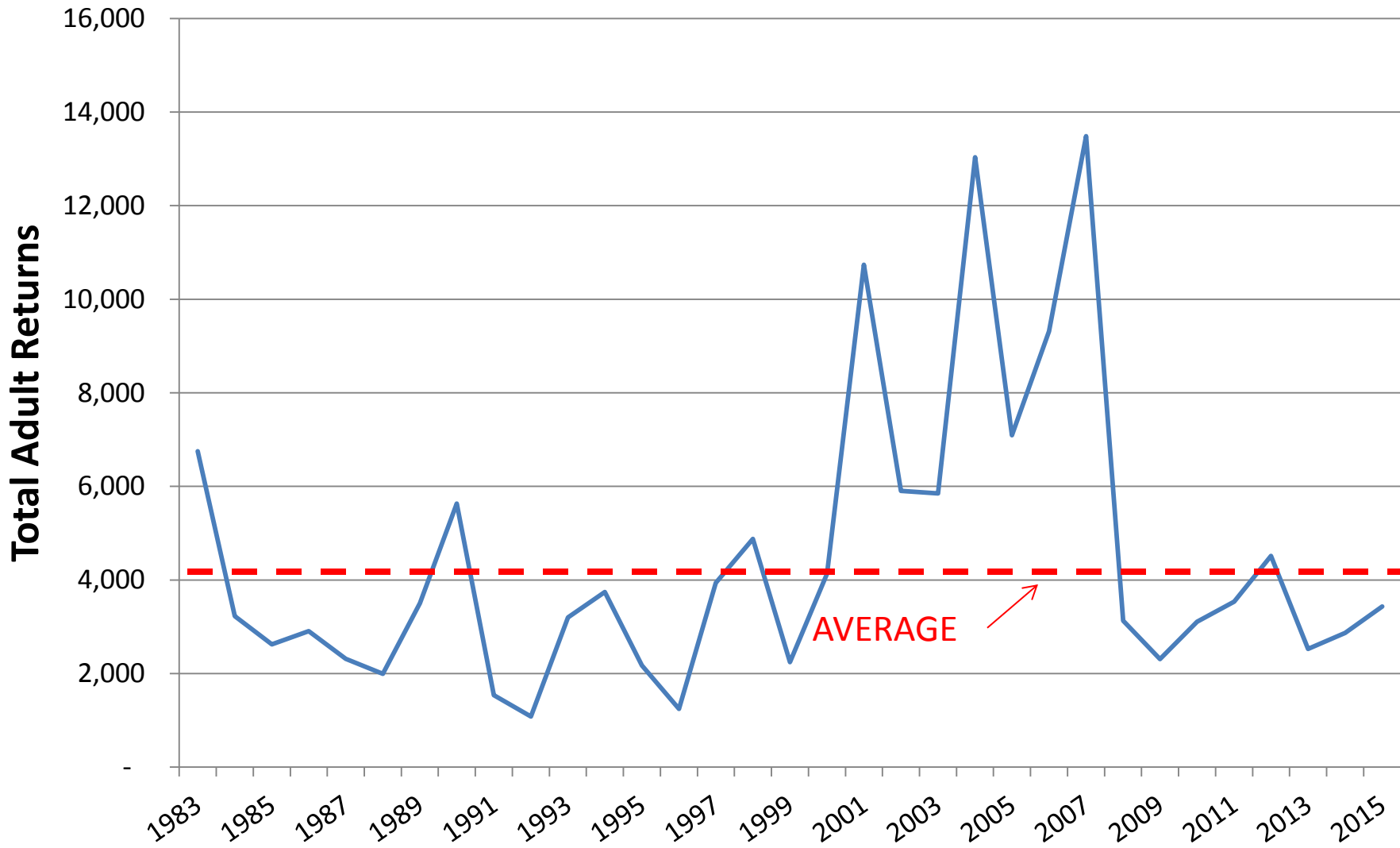
Data source: WDFW
*2015 data provisional

Sammamish Population Chinook Redds 2000-2015*



Data source: WDFW
*2015 data provisional

Issaquah Hatchery Returns 1983-2015*



Data source: WDFW
*2015 data provisional

Chinook Redds in Tributaries – Sammamish Population

Creek	1999	2000	2001	2002	2003	2004	2005	2006	2007	2008	2009	2010	2011	2012	2013	2014	2015
Bear	137	30	42	25	24	25	40	12	20	44	9	1	17	41	16	5	60
Cottage	171	103	96	102	120	96	82	119	69	88	39	59	38	106	32	55	78
EF Issaquah				0	3	25	11	3	30	13	19	29	18	15	28	31	12
Little Bear	1	1	1	3	3	1	0	0	5	1	1	0	0	0	NS	NS	7
North Creek	2	4	6	10	1	5	4	9	3	5	7	3	5	14	NS	NS	4
Kelsey Creek		8	4	4	0	0	4	72	77	8	3	0	0	0	0	0	NS



Data source: WDFW
*2015 data provisional