

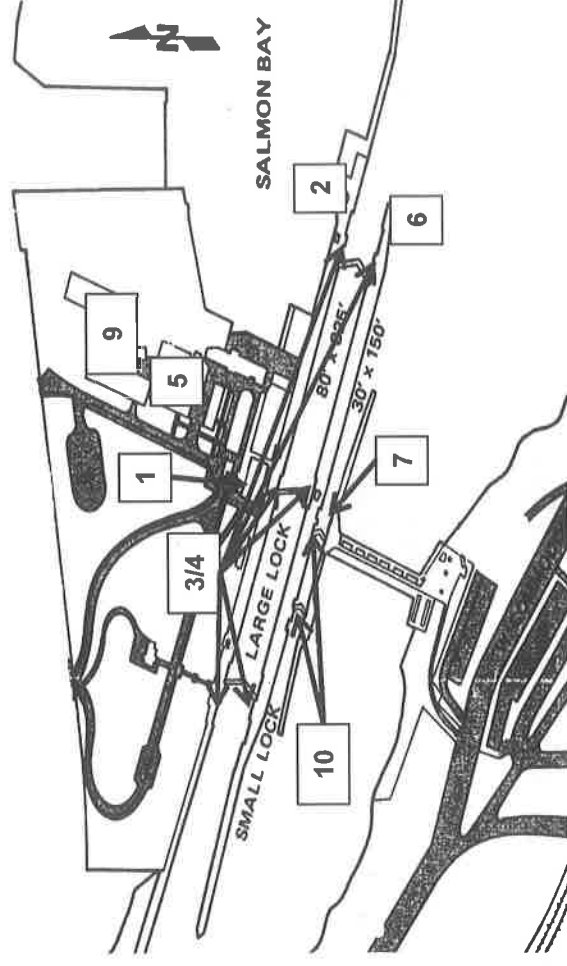
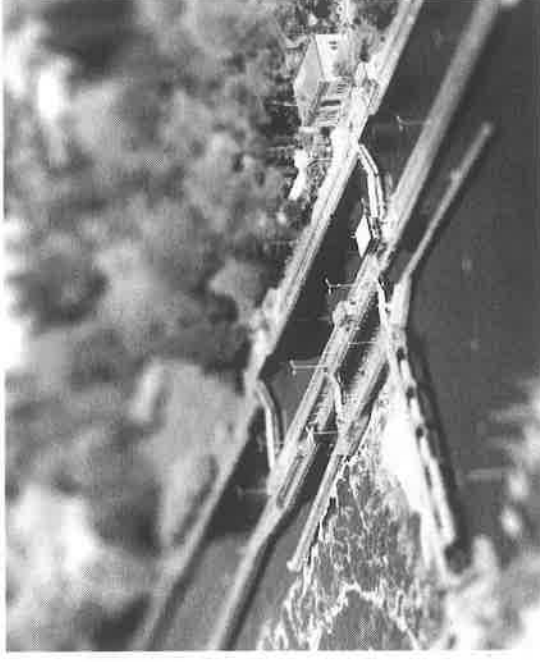
Prioritized Projects (Needed Repairs)

Projects are prioritized by need, safety, and/or requirement to meet the mission

- ✓ *Monolith Scour Repair - COMPLETE*
- ✓ *Spillway Radial Gate Replacement - COMPLETE*

1. Pumping Plant Replacement
2. Large Lock Emergency Closure System Rehabilitation (Crane Replacement)
3. Filling Culvert Valve and Machinery Replacement (Stoney Gate valves)
4. Large Lock Gate Rehabilitation
5. Seismic Retrofit of Transformer House
6. Saltwater Drain Intake System and Permanent Solution to Diffuser Well

7. Emergency Closure for Small Lock
8. Electrical System Rehabilitation
9. Maintenance Building Rehabilitation
10. Small Lock Machinery Replacement



Current Projects to Improve Fish Passage and Understand Migration Behavior at LWSC

1. Filling Culvert Valve Replacement (Stoney Gate valves) – Valves are currently in design and will improve fish passage by slowing velocity in culverts during lockings. (Cedar River Instream Flow Commission contributed \$100k toward design)
2. Large Lock Filling Culvert Pit Tag Reader Installation
3. Smolt Flume Redesign

