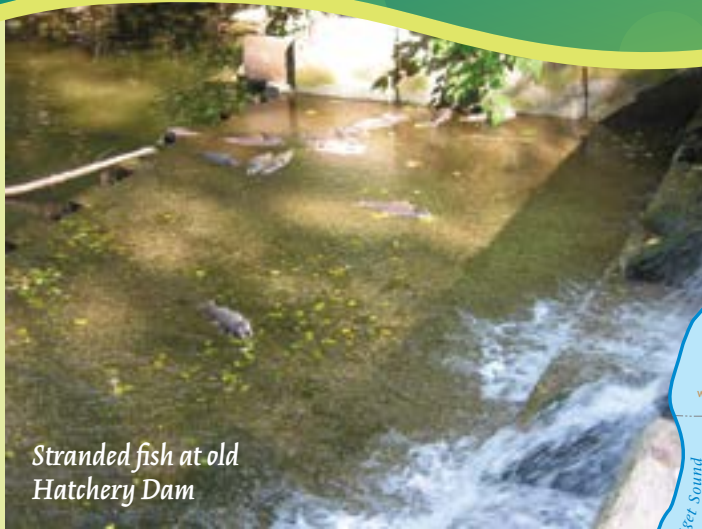


Issaquah Creek Integrated Fish Passage Project – Washington Department of Fish and Wildlife (WDFW) and City of Issaquah



Stranded fish at old Hatchery Dam

PURPOSE/NEED: Built in the 1930's with a small, steep fish ladder, the Hatchery Dam severely restricted fish passage to more than 11 miles of high quality salmon habitat. It also caused direct salmon mortality as fish were stranded during low flows. The dam, which was also deteriorating, was recognized as a significant problem in the 2005 Chinook Salmon Conservation Plan for the Lake Washington/Cedar/Sammamish Watershed (WRIA 8). Removal was widely endorsed by local, state and federal officials, agencies, and tribes.

INTENDED OUTCOME: The dam was deconstructed and replaced with a fish-friendly series of weirs, allowing salmon access to upstream habitat. To further improve habitat, the project added streamside plants, placed large woody debris in the stream, and improved fish passage on the adjacent Cabin Creek tributary that enters the site. Streamside plantings will continue for several years, with help from Mountains to Sound Greenway Trust, the City's partner in many habitat restoration projects.

A new gravity water intake structure was built to provide water to the hatchery for years to come. Its innovative and low-maintenance design allows unobstructed flow, eliminating the fish passage problem.

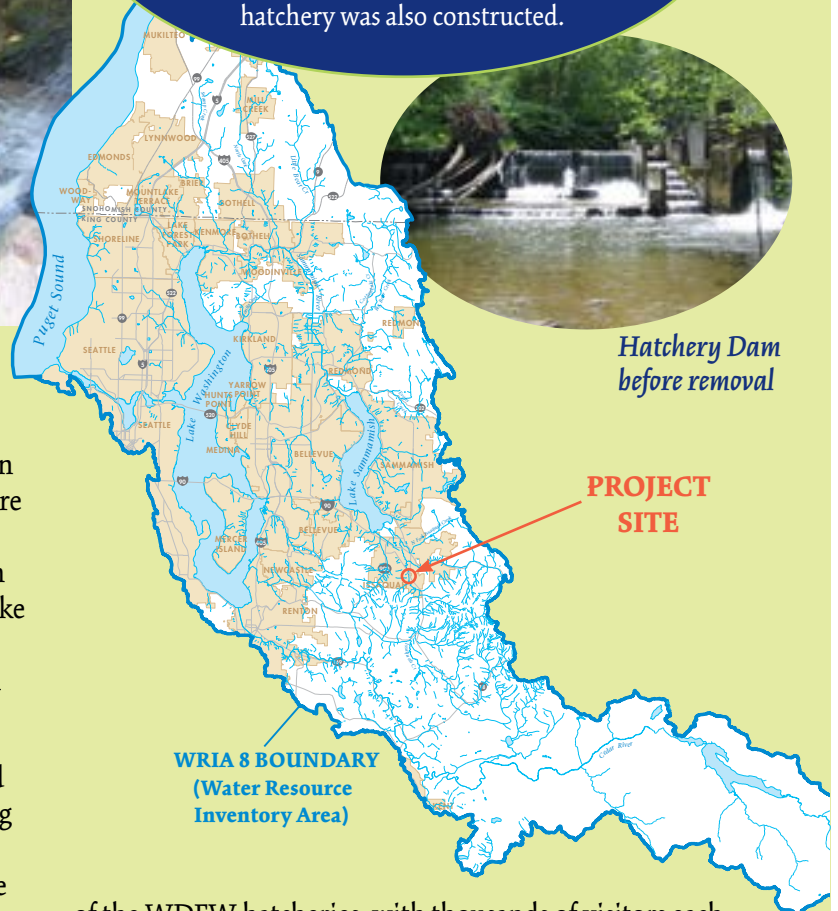
The Issaquah Salmon Hatchery is an important production facility for tribal and sport fisheries and is the most visited

PROJECT DESCRIPTION:

A 12-foot high diversion dam, built to supply water to the Issaquah Hatchery, was removed from Issaquah Creek and replaced with a series of 13 rock weirs to stabilize the channel and provide fish passage. A new fish-passable water intake for the hatchery was also constructed.



Hatchery Dam before removal



PROJECT SITE

of the WDFW hatcheries, with thousands of visitors each year—especially during October's Issaquah Salmon Days.

STATUS: The project was constructed in 2013. Re-establishing plants and monitoring is ongoing with help from Mountains to Sound Greenway Trust.

FUNDING/PARTNERS: The Washington State Salmon Recovery Funding Board (through WRIA 8) in 2008 awarded a grant to the City of Issaquah, in partnership with WDFW, for a feasibility study to evaluate dam removal options. In 2010, the National Oceanic and Atmospheric



Issaquah Creek Integrated Fish Passage Project – Washington Department of Fish and Wildlife (WDFW) and City of Issaquah

Administration’s Open Rivers Initiative provided a grant to design the chosen alternative. The State of Washington Jobs Now Act allocated \$4 million for construction in 2012, which was completed in 2013 under WDFW direction.

COST: \$4.8 million (feasibility, design, permitting and construction)

FOR MORE INFORMATION: Kerry Ritland, City of Issaquah, kerryr@issaquahwa.gov, Tim Ward, WDFW, Timothy.Ward@dfw.wa.gov or visit www.issaquahwa.gov/index.aspx?nid=1158



The old dam is deconstructed.



Heavy equipment is used to build new rock weirs.



This aerial view of the completed project with water in the channel shows the weirs in action.