

Progress in Implementing Programmatic Actions

WRIA 8 Summit

Dec. 3rd, 2010

Overview

- What do we mean by programmatic actions?
- Why do they matter?
- Challenges in tracking
- Overview of 2009 survey results
- Overview of other WRIA 8 programmatic actions
- Recommendations for the future

Programmatic Actions

- Land Use Actions
 - Regulations, planning
 - Incentive programs
- Public Outreach & Education Actions

Challenges in Tracking



- Tracked programmatic actions through surveys 2006-8
- Now moving towards using state HWS database
- Programs are on-going, no end date
- Difficult to quantify level of implementation
- Most actions are not map-able
- Format of WRIA 8 Plan recommendations

WRIA 8 Programmatic Surveys

- Surveys administered in 2008 and 2009 for actions taken in 2006-2007, 2008
- Polled WRIA 8 Jurisdictions
- Survey asked: *Is program being implemented?*
- In 2009 added qualitative rating of actions & also analyzed by population and/or land area

2009 Survey Results

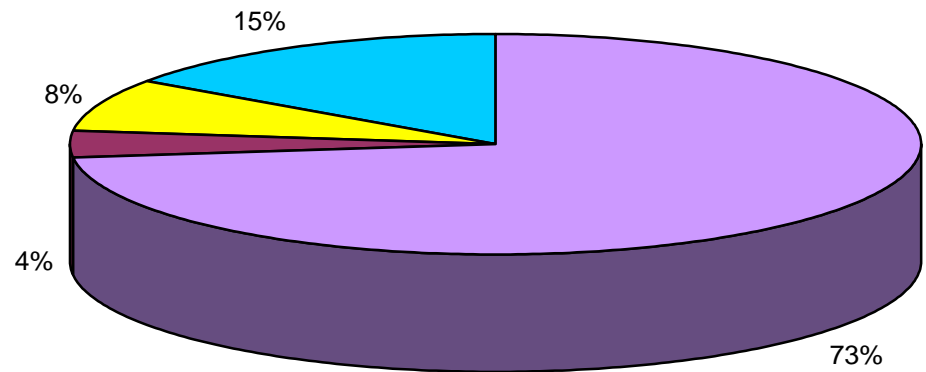
AREAS for FOCUS PRIORITY ACTION ISSUES PRIORITY ISSUES FOR MONITORING LOWER PRIORITY ISSUES

LEVEL OF IMPORTANCE  H i g h l o w	LH—LOW IMPLEMENTATION, HIGH IMPORTANCE <ul style="list-style-type: none"> • Shoreline Contractor Workshops • Lakeshore Workshops • Lakeshore Demonstration Projects • Shoreline Outreach • Large Woody Debris 	MH—MEDIUM IMPLEMENTATION, HIGH IMPORTANCE <ul style="list-style-type: none"> • Incentives • Outreach to Property Owners • Low Impact Development • Natural Yard Care • Stormwater Regulations w/ LID • Volunteer Events 	HH—HIGH IMPLEMENTATION, HIGH IMPORTANCE <ul style="list-style-type: none"> • Forest Cover/Riparian Buffer Education • Water Quality Education • Best Management Practices (BMPs) • Critical Areas Ordinances (CAOs) • Shoreline Master Programs (SMPs) • Tree Regulations • Stormwater Regulations 	
	LM—LOW IMPLEMENTATION, MEDIUM IMPORTANCE <ul style="list-style-type: none"> • Boater Education • Designer/Contractor Education • Withdrawals 	MM—MEDIUM IMPLEMENTATION, MEDIUM IMPORTANCE <ul style="list-style-type: none"> • Groundwater Protection • TMDL • CARAs • Water Conservation • Car Washes 	HM—HIGH IMPLEMENTATION, MEDIUM IMPORTANCE <ul style="list-style-type: none"> • Regulatory Flexibility 	
	LL—LOW IMPLEMENTATION, LOW IMPORTANCE	ML—MEDIUM IMPLEMENTATION, LOW IMPORTANCE <ul style="list-style-type: none"> • Garden Tours 	HL—HIGH IMPLEMENTATION, LOW IMPORTANCE <ul style="list-style-type: none"> • Call Numbers 	
	Low  High	STATUS OF IMPLEMENTATION		

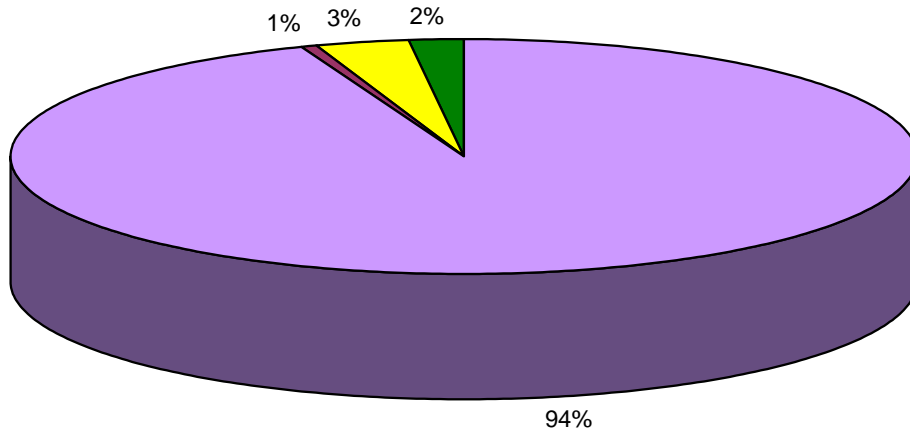
Wood / Forest Protection Programs

OFFER EDUCATION about PROTECTION OF FOREST COVER or IMPORTANCE OF RIPARIAN BUFFERS

by Percent of Jurisdictions



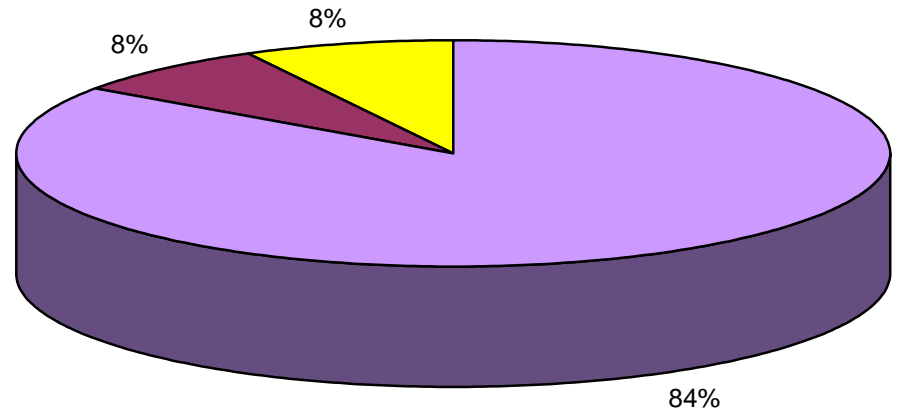
by Percent of Population



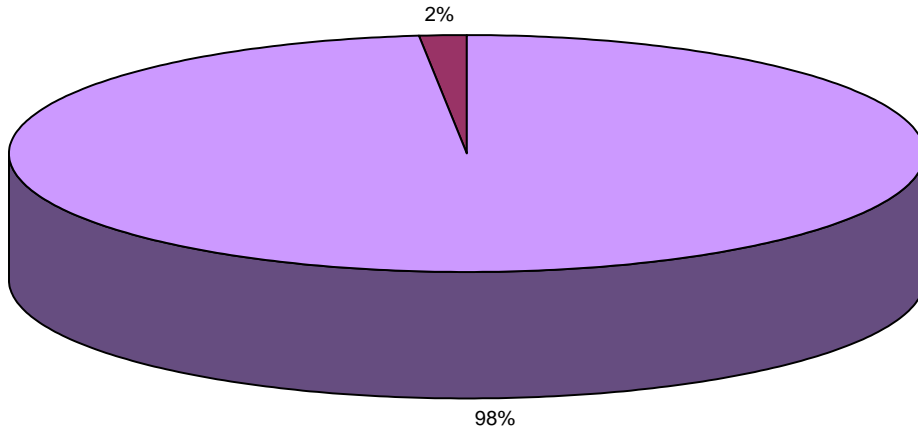
Stormwater-related Programs

PROMOTE STORMWATER BEST MANAGEMENT PRACTICES (BMPs)

by Percent of Jurisdictions

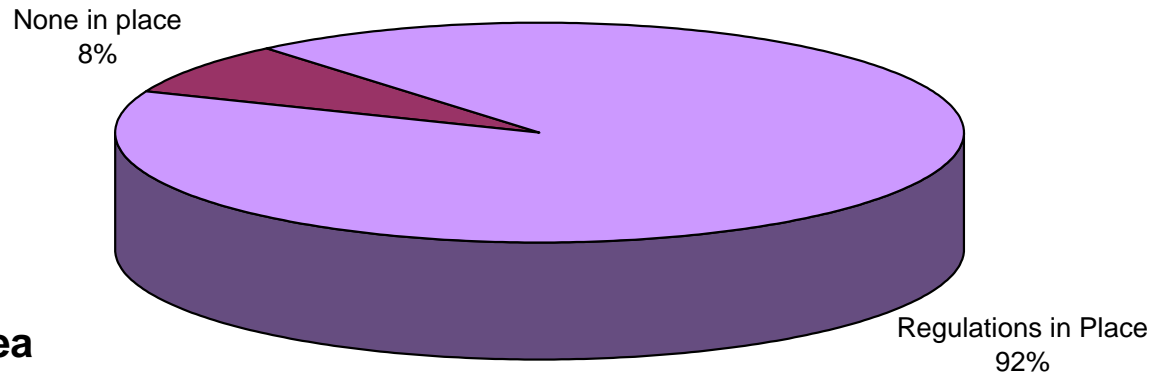


by Percent of Land Area

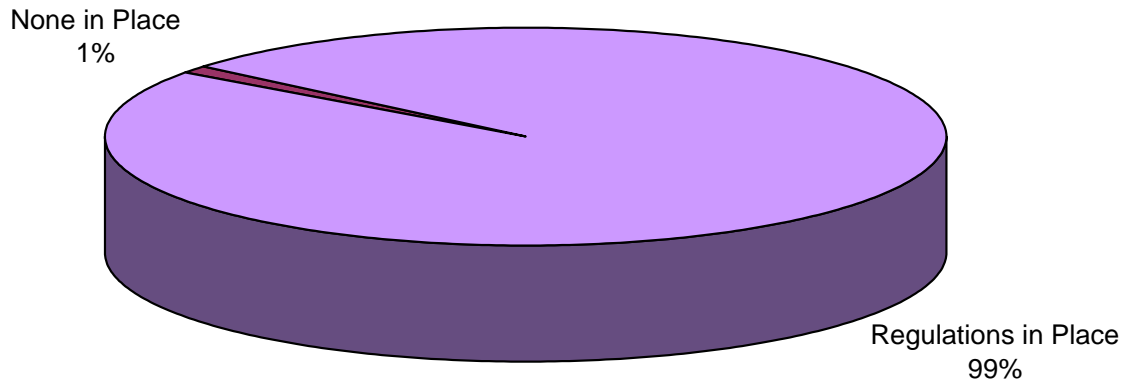


EMPLOY TREE PROTECTION REGULATIONS

by Percent of Jurisdictions



by Percent of Land Area



Celebrate the “High/Highs”

These actions are some of the most important:

- Forest Cover/Riparian Buffer Education
- Water Quality Education
- Promoting Stormwater Best Practices
- Critical Areas Ordinances
- Shoreline Master Plans
- Tree Protection Regulations
- Stormwater Regulations
- Regulatory Flexibility to Promote Habitat Protection

Maintain & Evaluate High/Highs

- Many are regulatory requirements – double credit
- Need to be vigilant, maintain efforts
- Need to monitor for effectiveness

Salmon SEEson

- 4th Annual Salmon SEEson fall campaign
- Goal: Increase awareness & support for salmon recovery
- Promoted salmon viewing in 7 locations from Aug. – Dec. in 2010



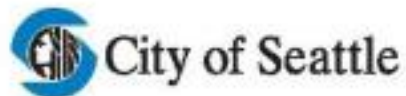
Green Shorelines Outreach



- Lakeside Living Workshops in 2005
- Surveys of Lakeshore Property Owners
- Green Shorelines Guidebook
- Workshops to Address Barriers & Incentives 2009
- Website & flyers

Green Shorelines Steering Committee

- Collaborative effort between local, regional, state, and federal agency staff
- Formed in December 2008





Salmon Conservation and Restoration

Lake Washington/Cedar/Sammamish Watershed

You're in: Salmon Conservation and Restoration > Lake Washington/Cedar/Sammamish Watershed > What You Can Do > Green Shorelines

Salmon Conservation and Restoration

Lake Washington/Cedar/Sammamish Watershed

What's New

Salmon Plan Implementation

Local Activities and Partners

Funding Opportunities

Plans, Studies and Maps

Committees

What You Can Do

Green Shorelines

Benefits of Green Shorelines

What Do Green Shorelines Look Like?

Shoreline Decision Tool

Getting Permits

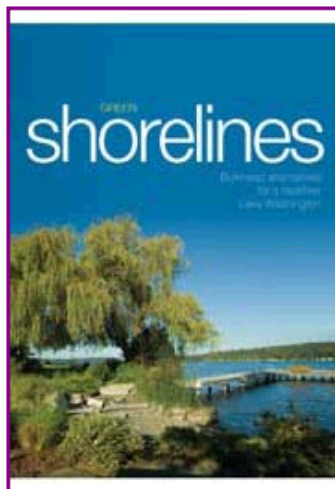
Contact Us

For help with the Lake Washington/Cedar/Sammamish Watershed Web site, please contact [Linda Grob](#).



Green Shorelines for Lake Washington and Lake Sammamish

A tool for lakeshore property owners on Lake Washington and Lake Sammamish to improve shorelines for people and salmon.



Green Shorelines: Bulkhead Alternatives for a Healthier Lake Washington offers lakeshore property owners a guide to understanding and implementing Green Shoreline practices and green dock designs, estimating costs and maintenance, and getting through the permitting process. The guidebook was produced by the City of Seattle, and the principles introduced in the guidebook apply to property owners on Lake Washington and Lake Sammamish.

[Email Us to Request a Free Copy of the Guidebook](#)

[View the Guidebook Online](#)

Benefits of Green Shorelines

Green shoreline designs incorporate natural features that offer several advantages over hard engineering approaches.

- Provide food and shelter for native fish and wildlife.

Related Information



- [Green Shorelines for Lakes Washington and Sammamish: Coordination and Communication Report](#)
- [2009 Green Shoreline Workshops](#)
- [Seattle's Green Shoreline Website](#)
- [University of Washington Fish Friendly Shorelines](#)
- [University of Washington Study of Lake Washington Shoreline Permitting](#)

Beach Naturalists



- 11 years & 185 volunteers
- Naturalists reach 1000's of beach visitors each year
- Salmon + Nearshore
- Funded by KCD

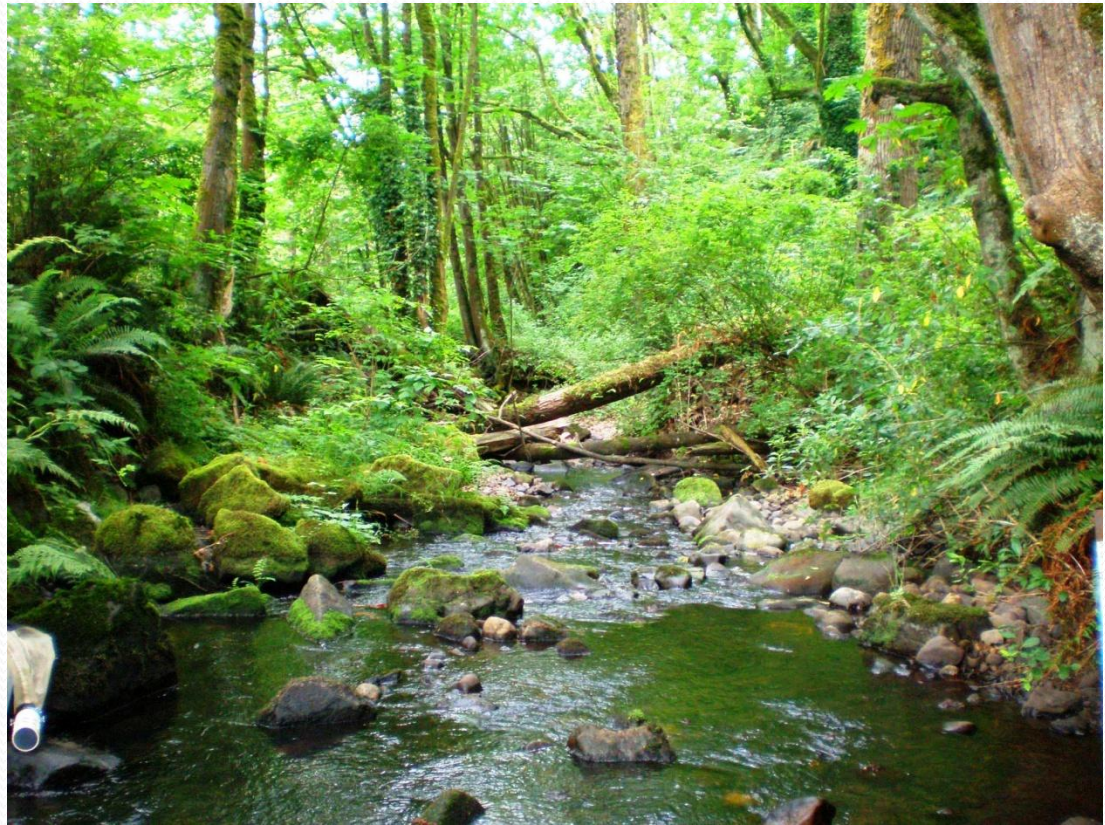
Salmon Watchers

- Volunteer science + community outreach
- 15th year –1,200 hours of volunteer time on 50 streams and 6,000 citizen contacts
- Funded by KCD





Outreach to Streamside Property Owners

- Identified as potential new outreach priority
- WRIA 8 workshop in late 2009



2009 Survey Results

AREAS for FOCUS PRIORITY ACTION ISSUES PRIORITY ISSUES FOR MONITORING LOWER PRIORITY ISSUES

H i g h  L o w	LH—LOW IMPLEMENTATION, HIGH IMPORTANCE <ul style="list-style-type: none"> • Shoreline Contractor Workshops • Lakeshore Workshops • Lakeshore Demonstration Projects • Shoreline Outreach • Large Woody Debris 	MH—MEDIUM IMPLEMENTATION, HIGH IMPORTANCE <ul style="list-style-type: none"> • Incentives • Outreach to Property Owners • Low Impact Development • Natural Yard Care • Stormwater Regulations w/ LID • Volunteer Events 	HH—HIGH IMPLEMENTATION, HIGH IMPORTANCE <ul style="list-style-type: none"> • Forest Cover/Riparian Buffer Education • Water Quality Education • Best Management Practices (BMPs) • Critical Areas Ordinances (CAOs) • Shoreline Master Programs (SMPs) • Tree Regulations • Stormwater Regulations 	
	LM—LOW IMPLEMENTATION, MEDIUM IMPORTANCE <ul style="list-style-type: none"> • Boater Education • Designer/Contractor Education • Withdrawals 	MM—MEDIUM IMPLEMENTATION, MEDIUM IMPORTANCE <ul style="list-style-type: none"> • Groundwater Protection • TMDL • CARAs • Water Conservation • Car Washes 	HM—HIGH IMPLEMENTATION, MEDIUM IMPORTANCE <ul style="list-style-type: none"> • Regulatory Flexibility 	
	LL—LOW IMPLEMENTATION, LOW IMPORTANCE	ML—MEDIUM IMPLEMENTATION, LOW IMPORTANCE <ul style="list-style-type: none"> • Garden Tours 	HL—HIGH IMPLEMENTATION, LOW IMPORTANCE <ul style="list-style-type: none"> • Call Numbers 	
	Low  High	STATUS OF IMPLEMENTATION		

Stewardship Events

Many other partners offer volunteer events:

- King Conservation District
- Friends of the Cedar River Watershed
- Mountains to Sound Greenway Trust
- Mid-Sound Fisheries Enhancement Group
- Friend of Madrona Creek



Efforts by Other Partners

- Puget Sound Starts Here Campaign
- Water Conservation Education/Incentives
- Water Quality Education for Boaters

Actions Needing More Focus – High/Lows

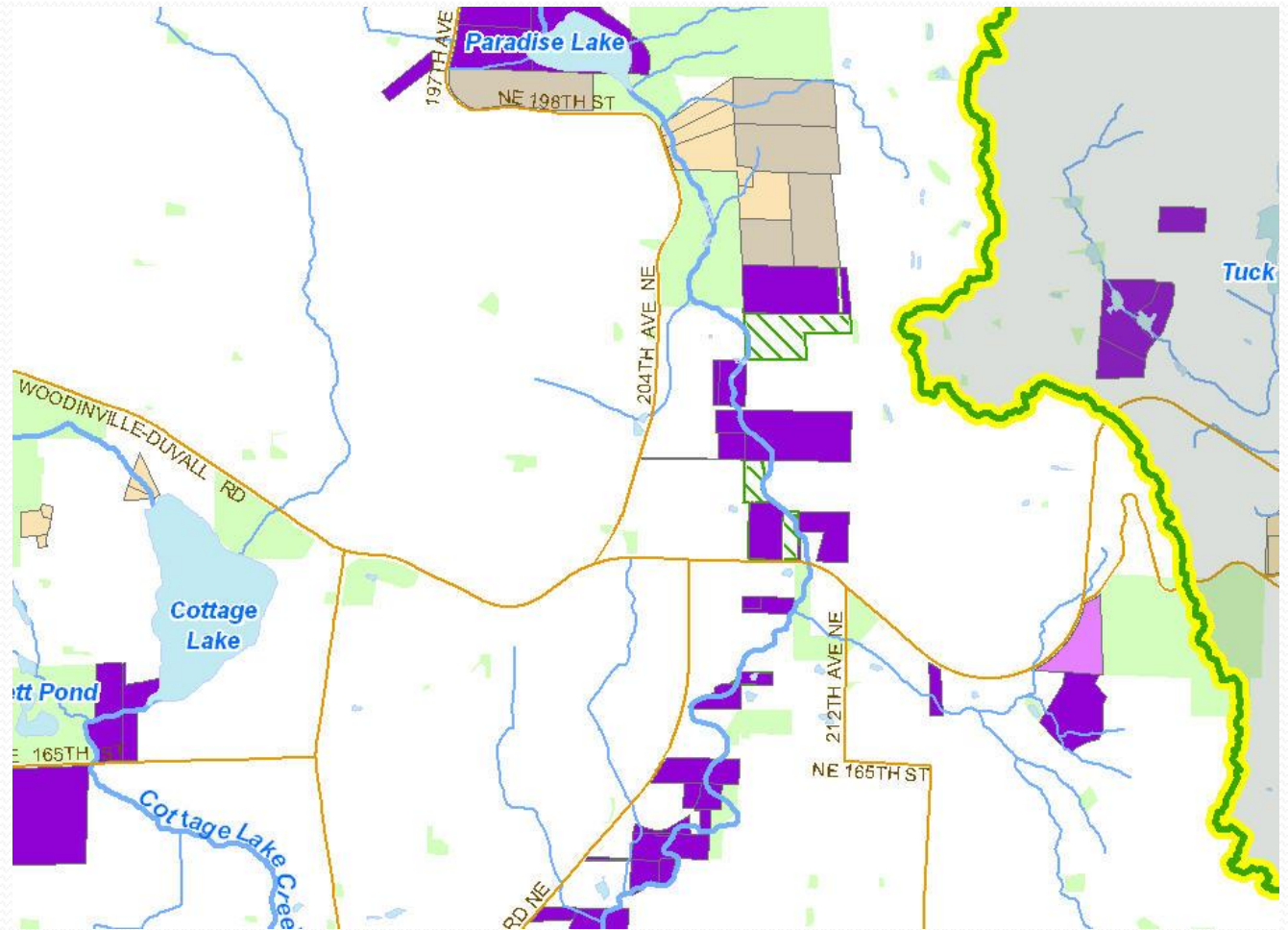
- Outreach regarding the benefits of large wood
- Education programs for landscaping designers/contractors
- Programs to address illegal water withdrawals
- Incentives to protect/restore ecological function

Actions Needing More Focus, cont.

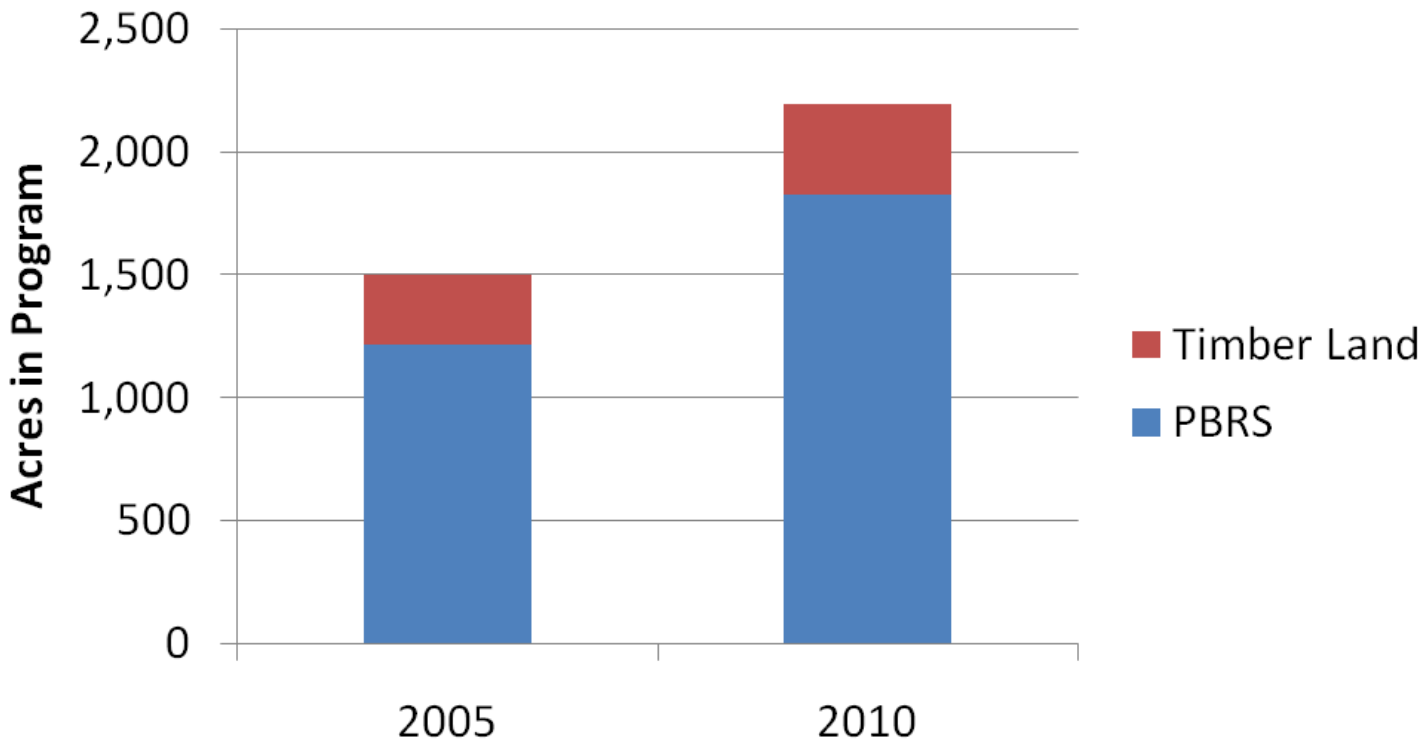
- Outreach to property owners to protect forest cover/habitat
- Promotion of low impact development
- Natural yard care program

Incentives to Protect Habitat

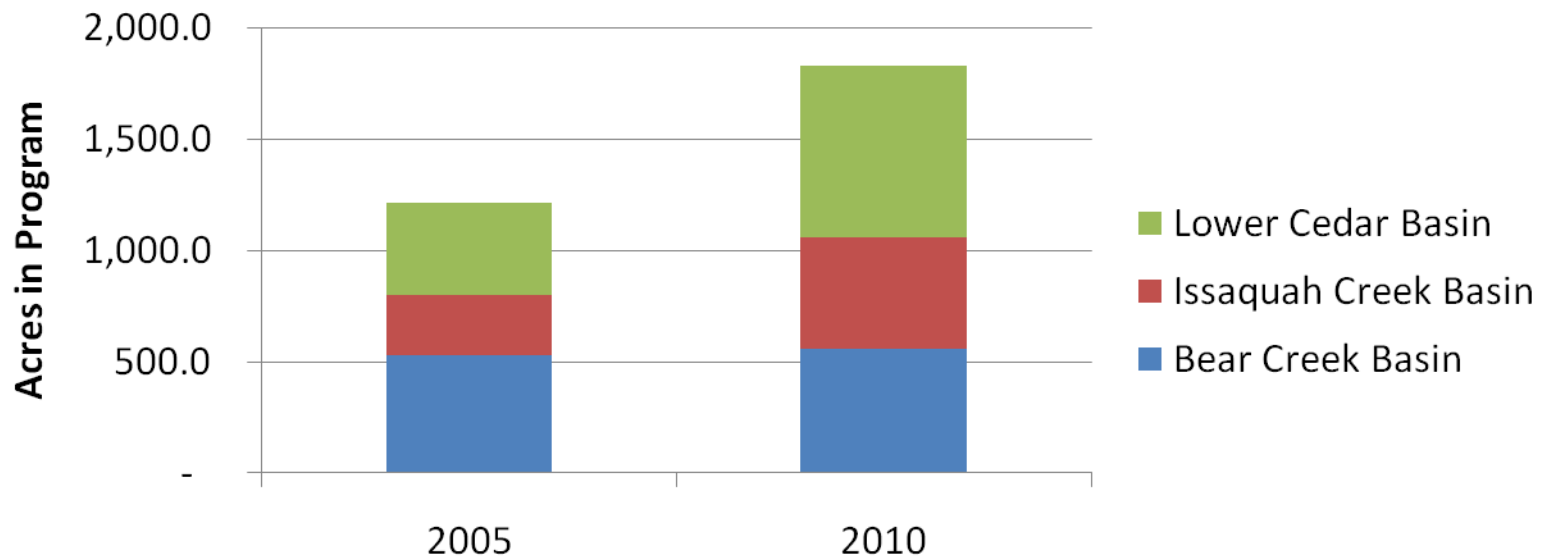
- Current Use Taxation = good example
- Map-able!



Total Acres in Current-Use Taxation Programs in WRIA 8



Acres in PBRS for Key WRIA 8 Basins



Outreach & Incentives for Property Owners

- Good example of an incentive program for property owners; not many jurisdictions reported similar programs
- Staffing/funding is an issue for incentive programs & outreach to property owners
- Opportunity with private/public partnerships for marketing

Key messages & recommendations

- Keep doing the things of high importance
- Monitor the effectiveness of those actions
- Seek third party review of the effectiveness of regulations
- Review actions needing more implementation, find ways to increase efforts
- Distill WRIA 8 programmatic actions into more track-able form

