

WRIA 8 Habitat Projects Progress Report 2005 - 2010



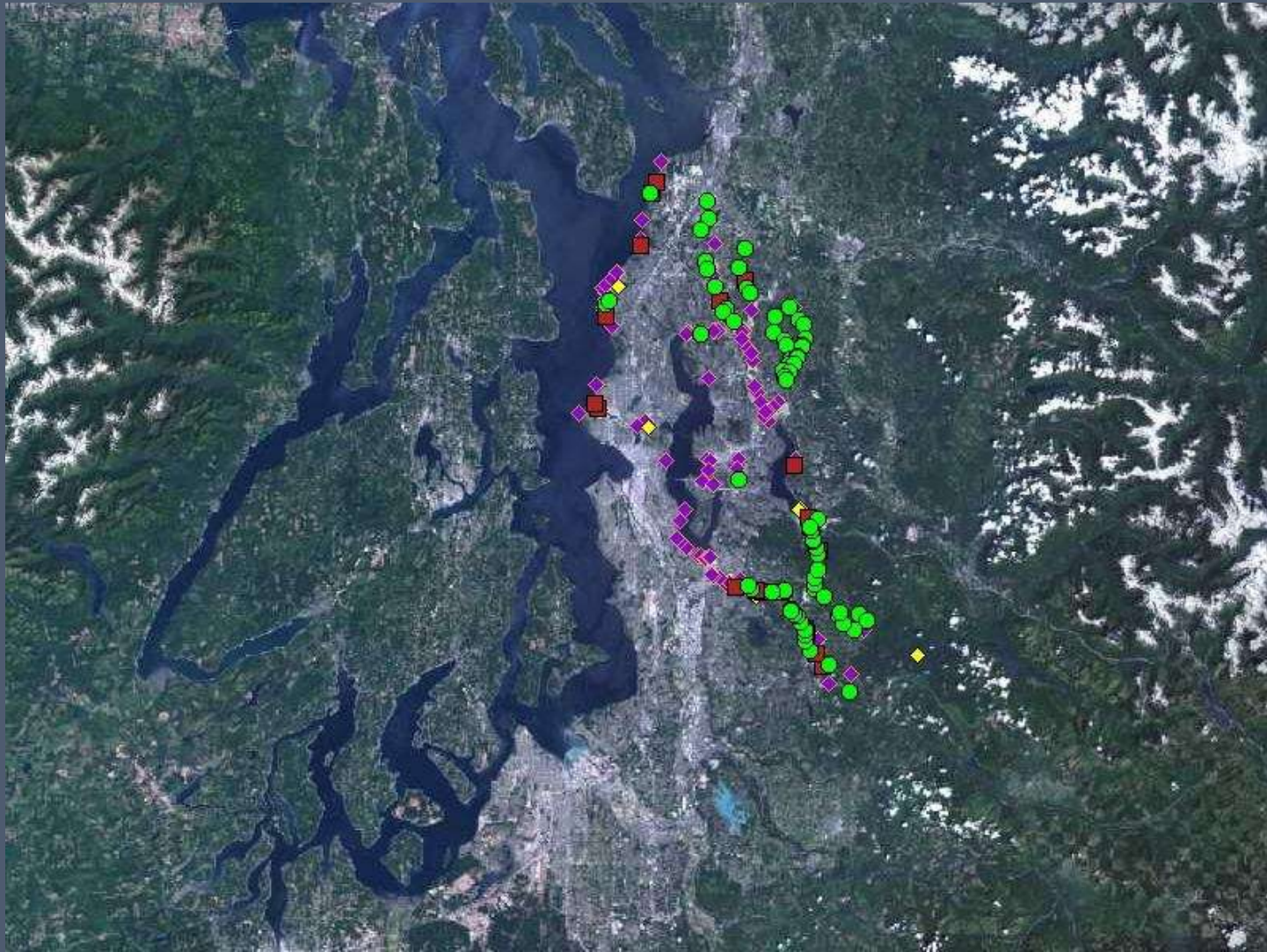
WRIA 8 Salmon
Recovery Council
Summit

December 3, 2010

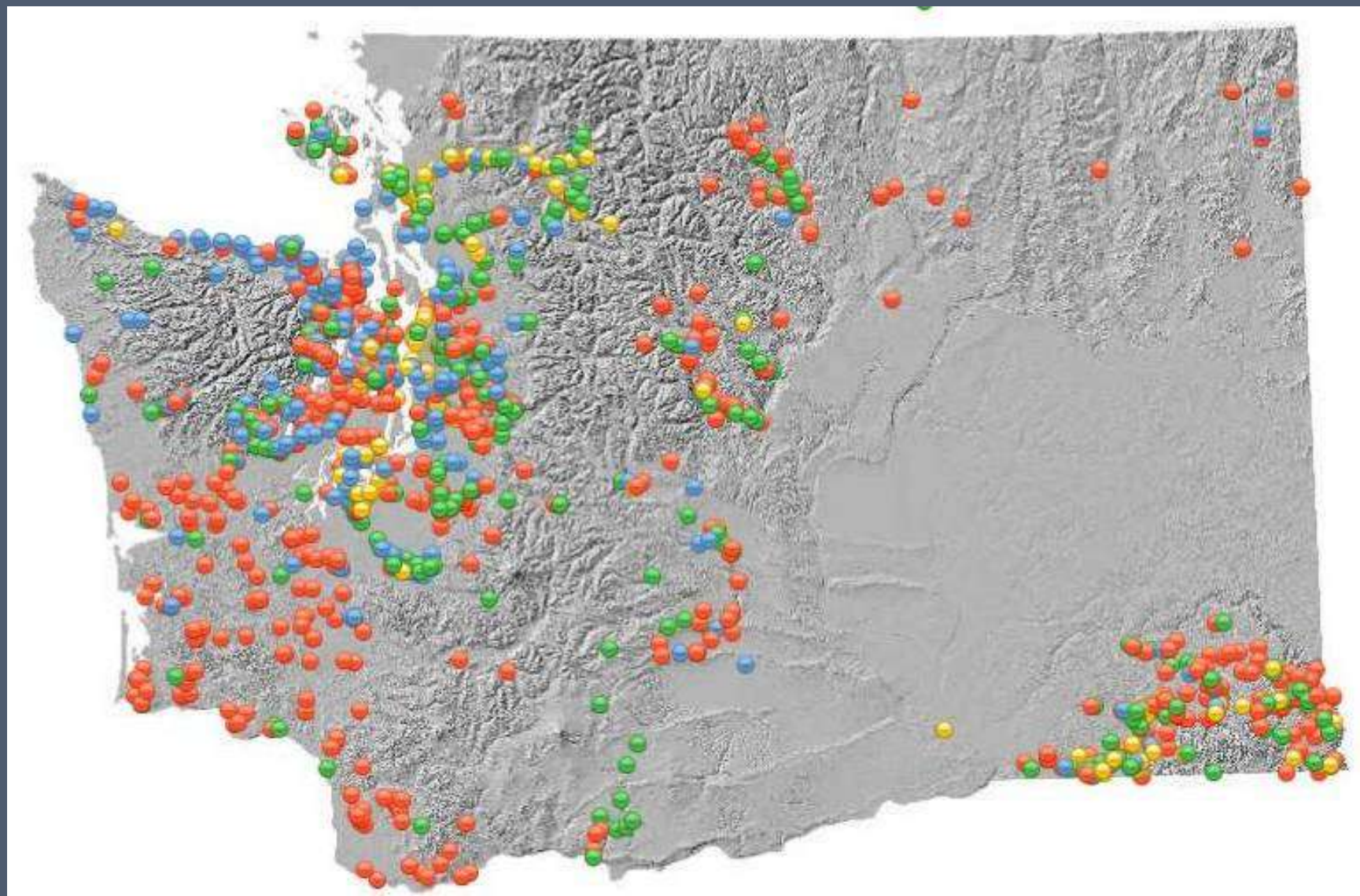
Habitat Projects Overview

- ▣ WRIA 8 Project Implementation Context
- ▣ Implementation Status by 10-Year Start List
- ▣ Implementation Status by Type and Amount of Habitat Change –
With Quick Tour of Sub-Areas Projects
- ▣ Next Steps

WRIA 8's Habitat Projects in Puget Sound's Salmon Recovery Plan and Action Agenda



WRIA 8's Projects Contribute to Statewide Salmon Recovery



**State Funds - Salmon Recovery Funding Board (SRFB)
Projects & Restoration (PSAR 2007 Onward) Projects:**

- WRIA 8 Pre-Plan 1999-2004 SRFB Project
- WRIA 8 Post-Plan 2005-2010 SRFB/PSAR Project

Local Funds - King Conservation District (KCD) Projects:

- WRIA 8 Pre-Plan 1999-2004 KCD Project
- WRIA 8 Post-Plan 2005-2010 KCD Project

Chinook Populations and Watershed Evaluation Tiers

Sammamish

- Tier 1
- Tier 2
- Shoreline Tier 1

Cedar

- Tier 1
- Tier 2
- Shoreline Tier 1

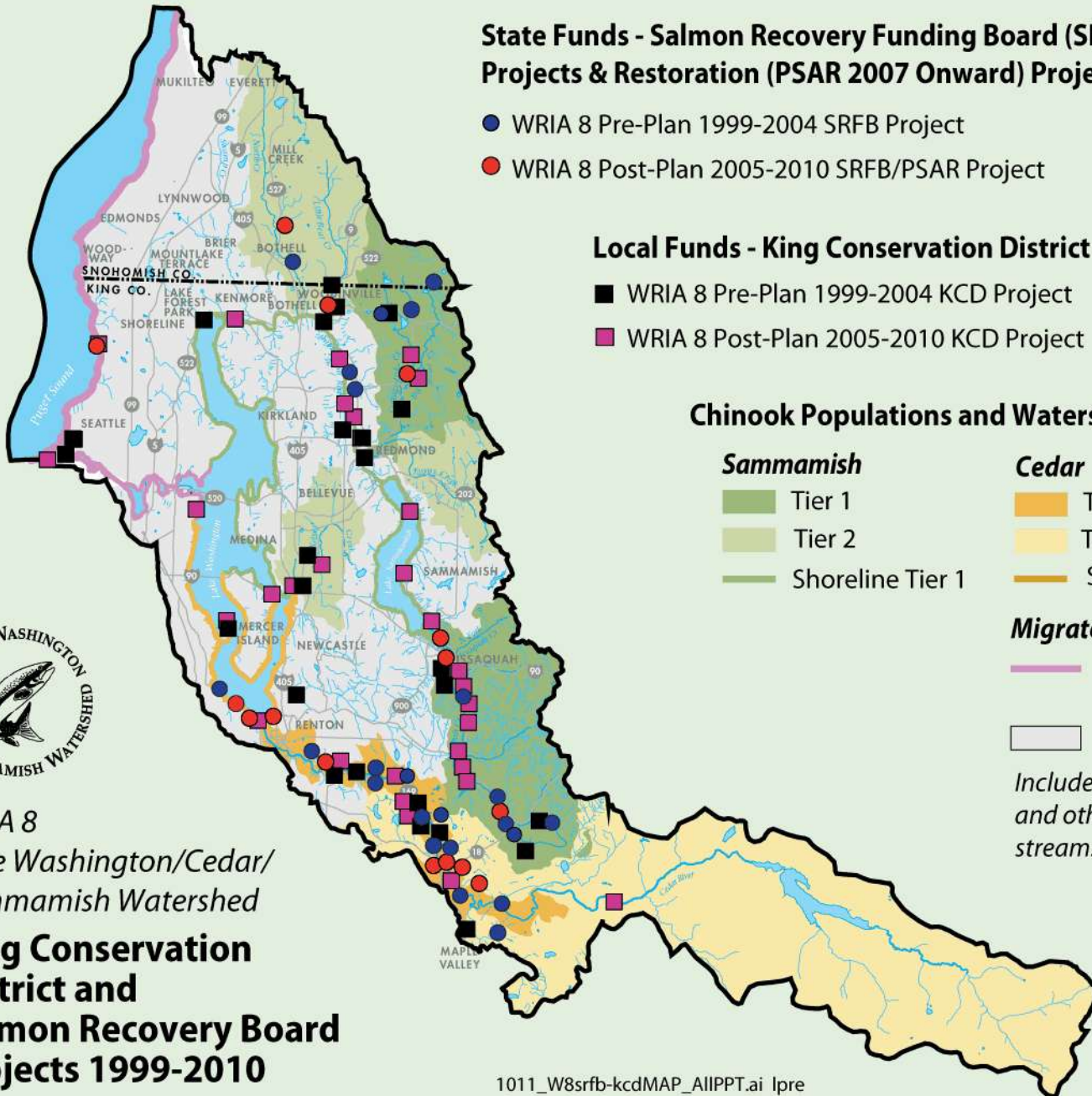
Migratory

- Migratory (Both Populations) Tier 1
- WRIA 8 Tier 3

Includes Tier 3 Chinook streams and other salmon-bearing streams not yet evaluated.



**WRIA 8
Lake Washington/Cedar/
Sammamish Watershed
King Conservation
District and
Salmon Recovery Board
Projects 1999-2010**



Salmon Habitat Projects 1999-2010

- ▣ **Post-Plan July 2005 - 2010**
 - **Completed: 23 Ten- Year Start List Projects**
 - **Funded:**
 - ▣ **14 Salmon Recovery Funding Board or Puget Sound Acquisition and Restoration Projects**
 - ▣ **32 King Conservation District Projects**

- ▣ **Before the Plan 1999 - July 2005**

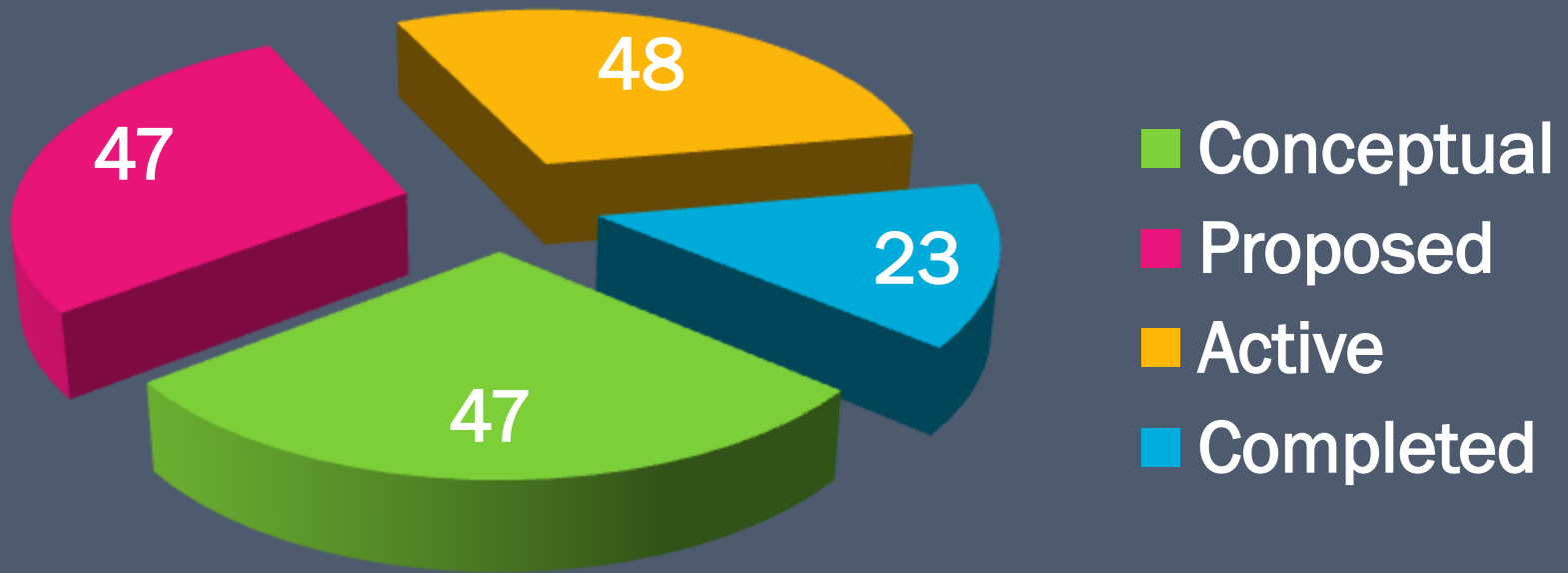
Completed Projects:

 - **9 Early Actions**
 - **24 Salmon Recovery Funding Board Projects**
 - **27 King Conservation District Projects**

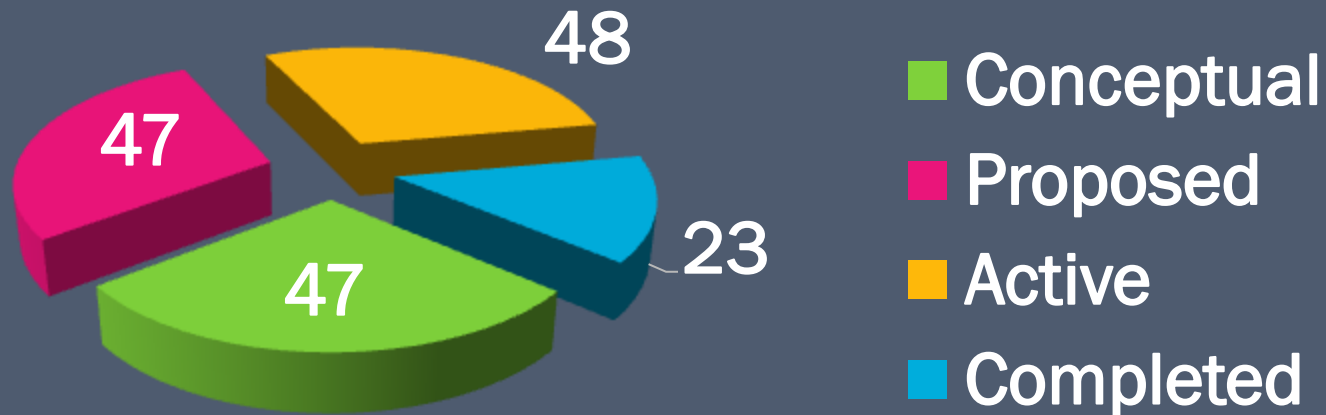
Project Implementation Status

WRIA 8 Plan 10-Year Start List - 165 Projects:

▣ 5 Year Status

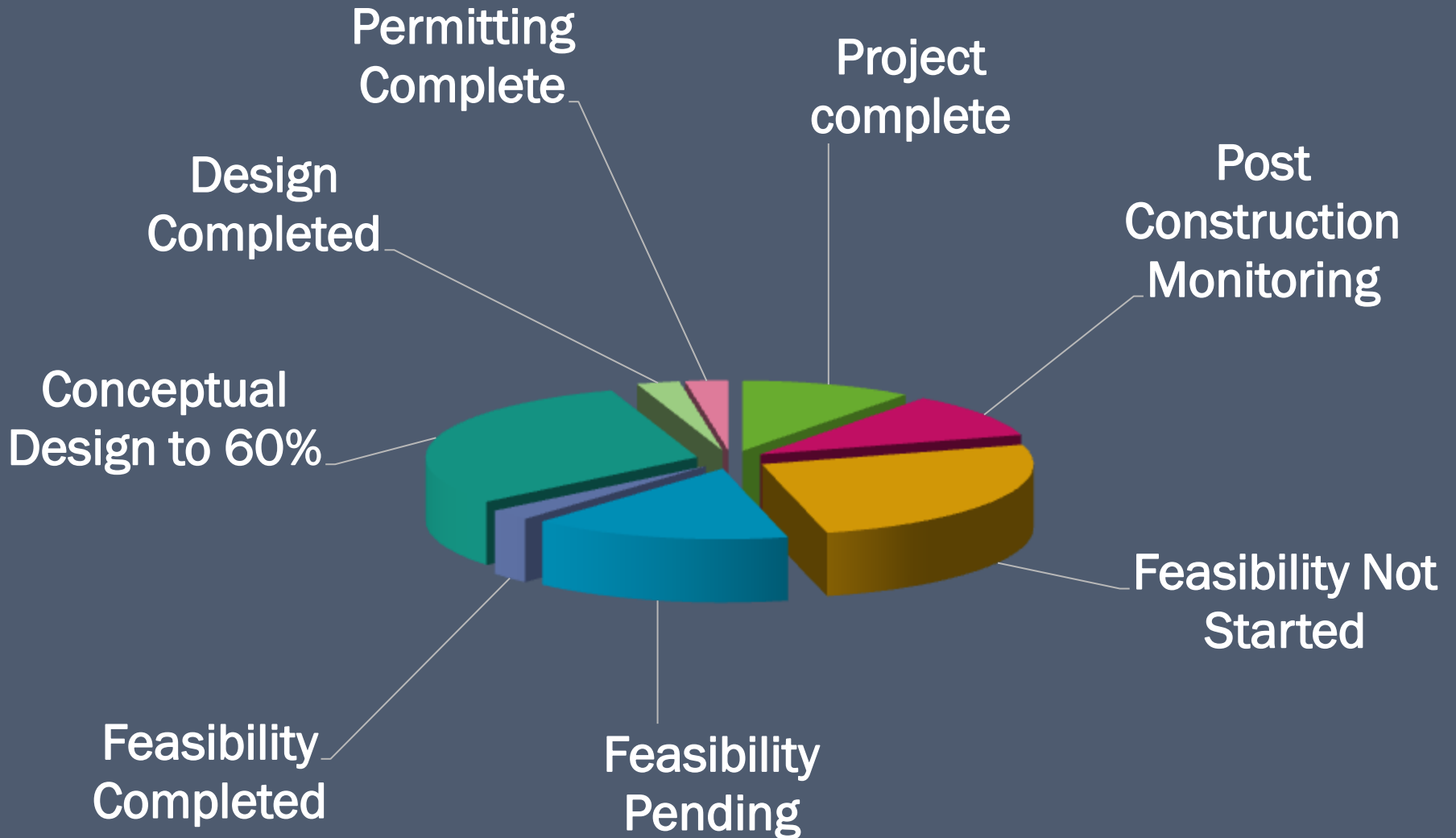


~ 14 % Completed - Concerns?



- ▣ 10-Year Start List - Too Ambitious?
- ▣ Less Funds than Anticipated?
- ▣ Less Staff Capacity?
- ▣ Barriers – Permits or Archeological?
- ▣ Larger Projects?
- ▣ More Complex?

Phases of 35 Restoration Projects



Project Implementation Tracking and Adaptive Management

2005 to 2010 Huge Improvements in Ability
to Track Implementation Progress

- ▣ 2005 – 2007
WRIA 8 Database of Plan Actions
- ▣ 2008 – 2009:
Actions transferred into State Habitat Work
Schedule (HWS) Database
- ▣ 2009 - 2010:
Projects are mapped as shapes –
Quantifiable areas for spatial analysis



Details Select All

- (C202) Cedar Reach 1: Revegetate right and left bank
 - (1967) Cedar Reach 1: Revegetate right and left bank
- (C203) Cedar Reach 2- Revegetation
 - (1947) C203- Approximate Riparian Restoration C
 - (7365) C203- Approximate Riparian Restoration C
 - (7366) C203- Approximate Riparian Restoration C
- (C204) Cedar Reach 2- Explore Redevelopment Options
 - (1948) C204- Approximate Riparian Restoration C

Attributes

Spatial Attributes

Object Type: Point
 Longitude:
 Latitude:

Object Data

| Field | Value |
|---------|-------------|
| OrgID | 240 |
| OrgName | WRIA 8 (LE) |

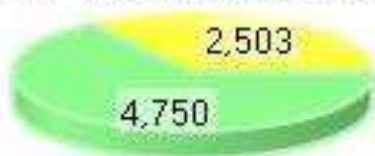
Progress -

Measurements of Salmon Habitat Change

- ▣ NOAA's *Habitat Limiting Factors* form the basis of what habitat changes are needed for salmon recovery
- ▣ Cedar River example of floodplain connectivity below:

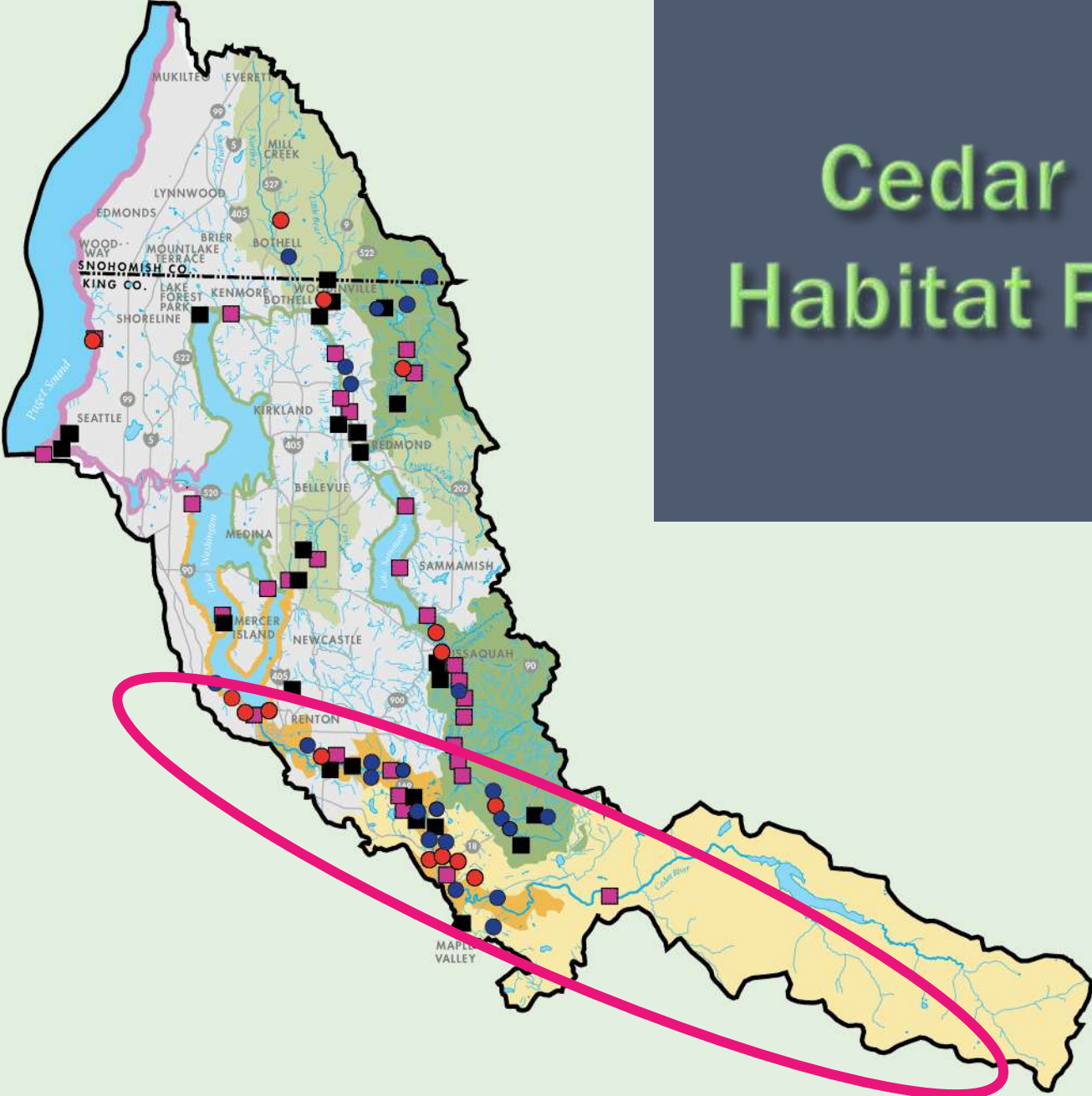
FLOODPLAIN CONNECTIVITY: Setback and remove dikes and levees to restore floodplain connectivity. Floodplains provide off-channel and margin refuge habitats, as well as lower velocity areas during periods of high flow. (5 projects)

Goal: 7,253 Linear Feet **Actual:** 4,750 Linear Feet **Progress:** 65% Completed



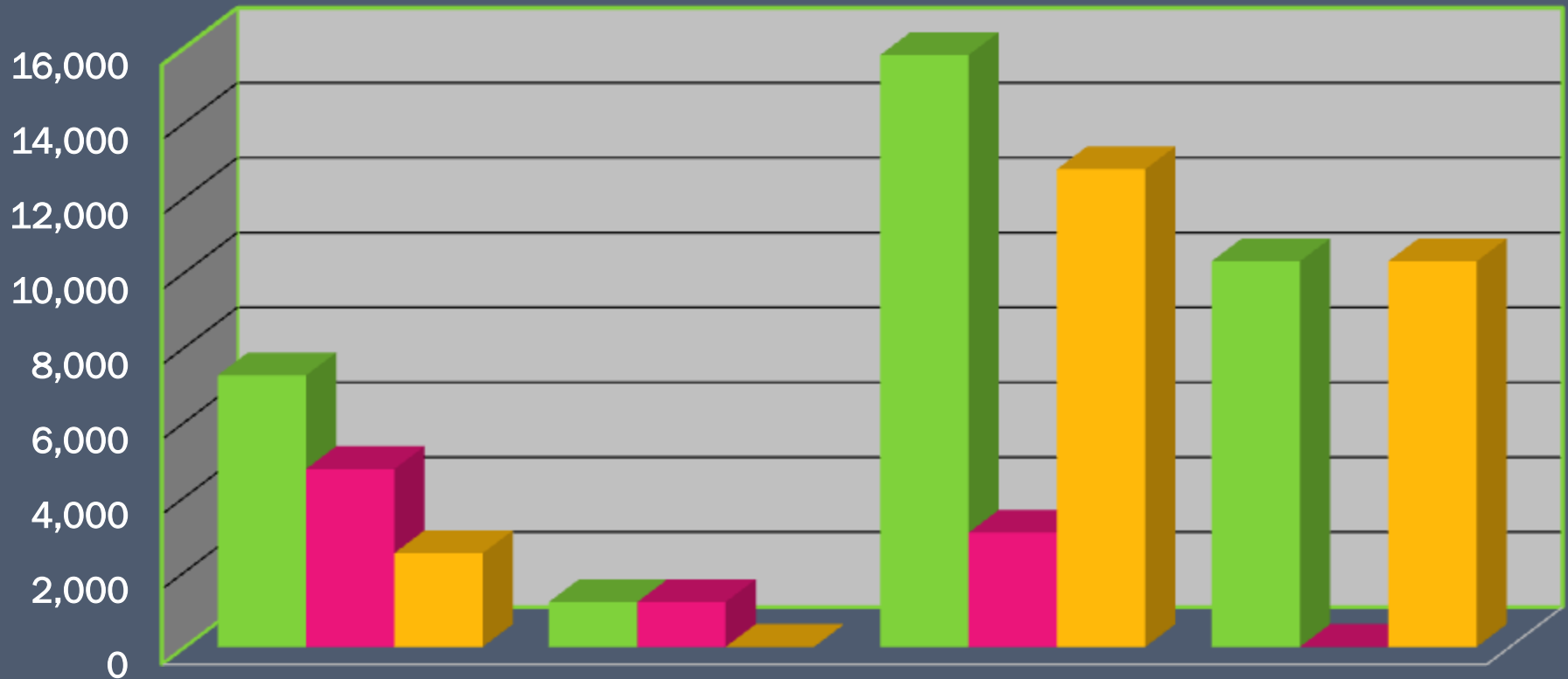
- ▣ Progress towards goal (4,750)
- ▣ Remaining (2,503)

Cedar River Habitat Projects



Cedar River Habitat Projects Measurements (1)

Linear Feet



Floodplain
Connectivity

Channel
Complexity

Lakeshore
Restoration

Bank
Softening

■ Habitat Goal

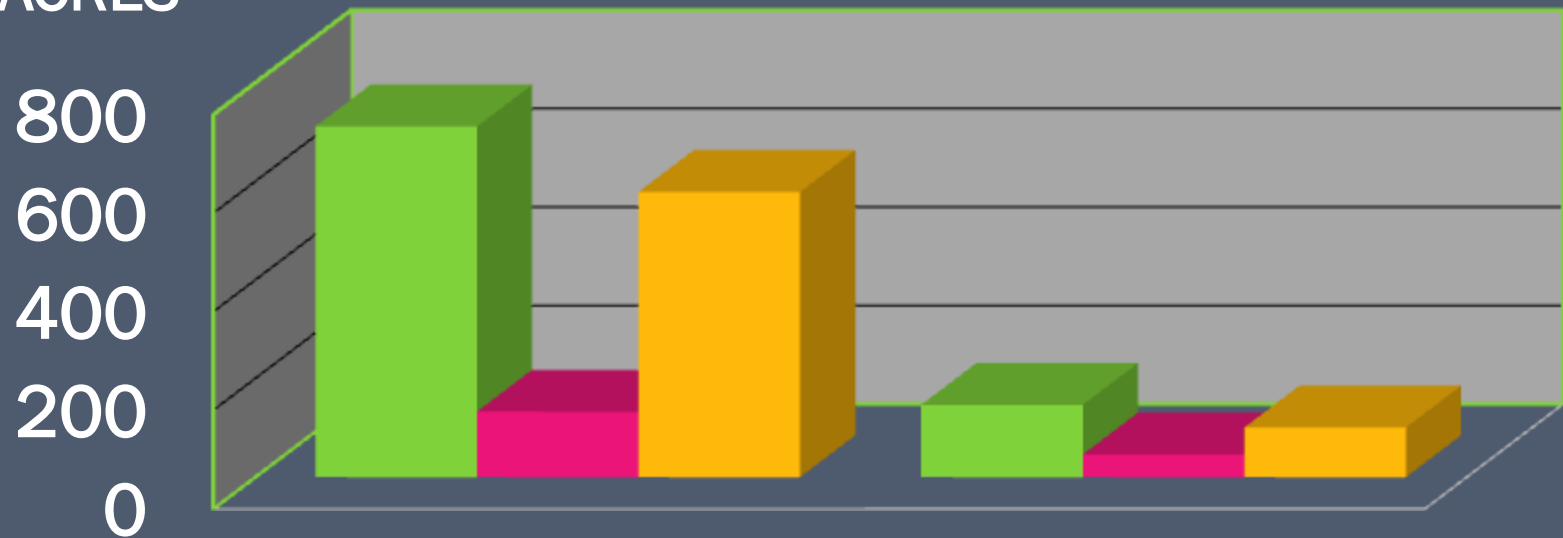
■ Completed

■ Remaining

Cedar River

Habitat Projects Measurements (2)

ACRES



Habitat
Protection

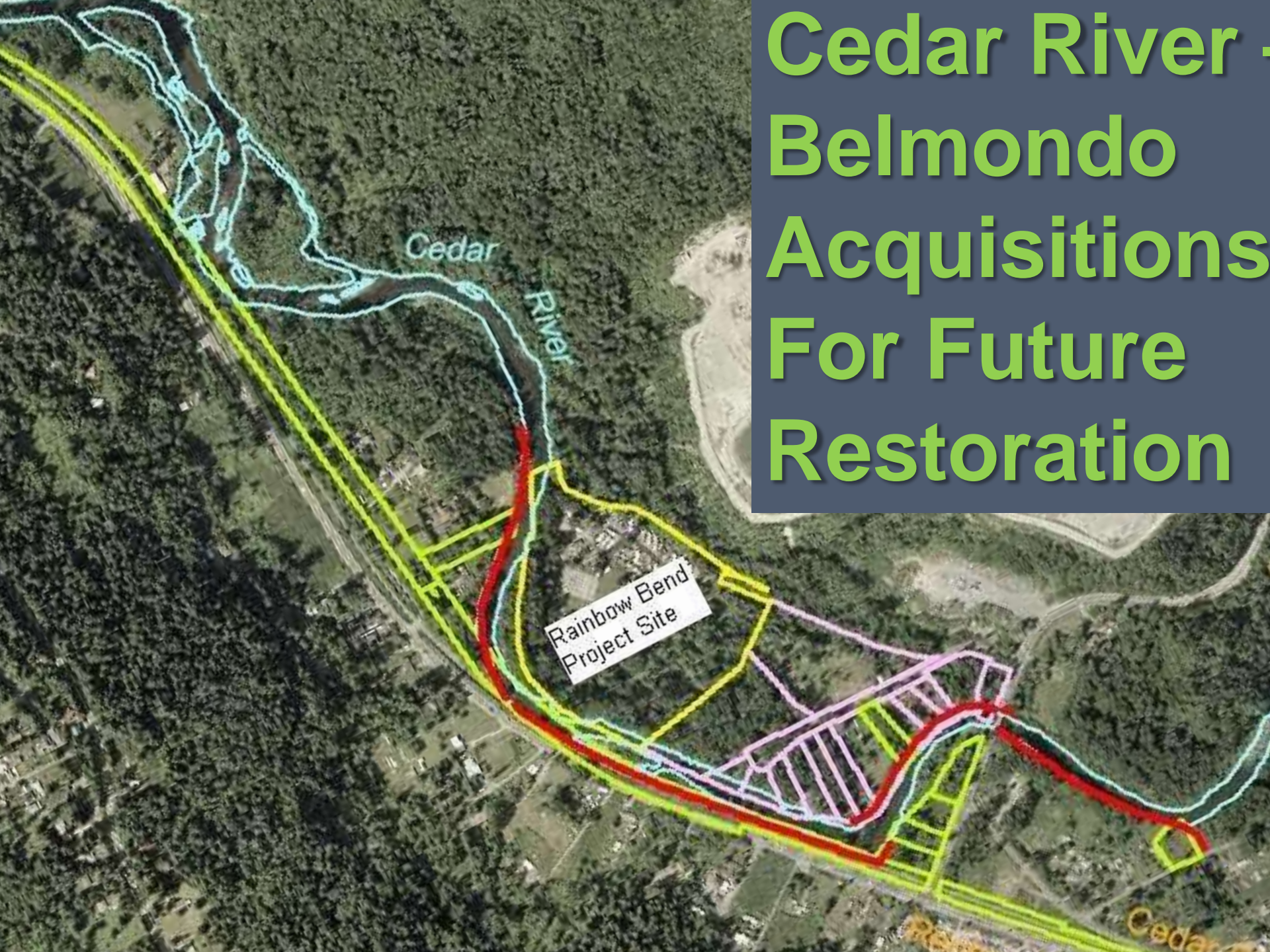
Riparian
Revegetation

■ Habitat Goal ■ Completed ■ Remaining

Cedar Rapids Floodplain Restoration



Cedar River - Belmondo Acquisitions For Future Restoration



Rainbow Bend
Project Site

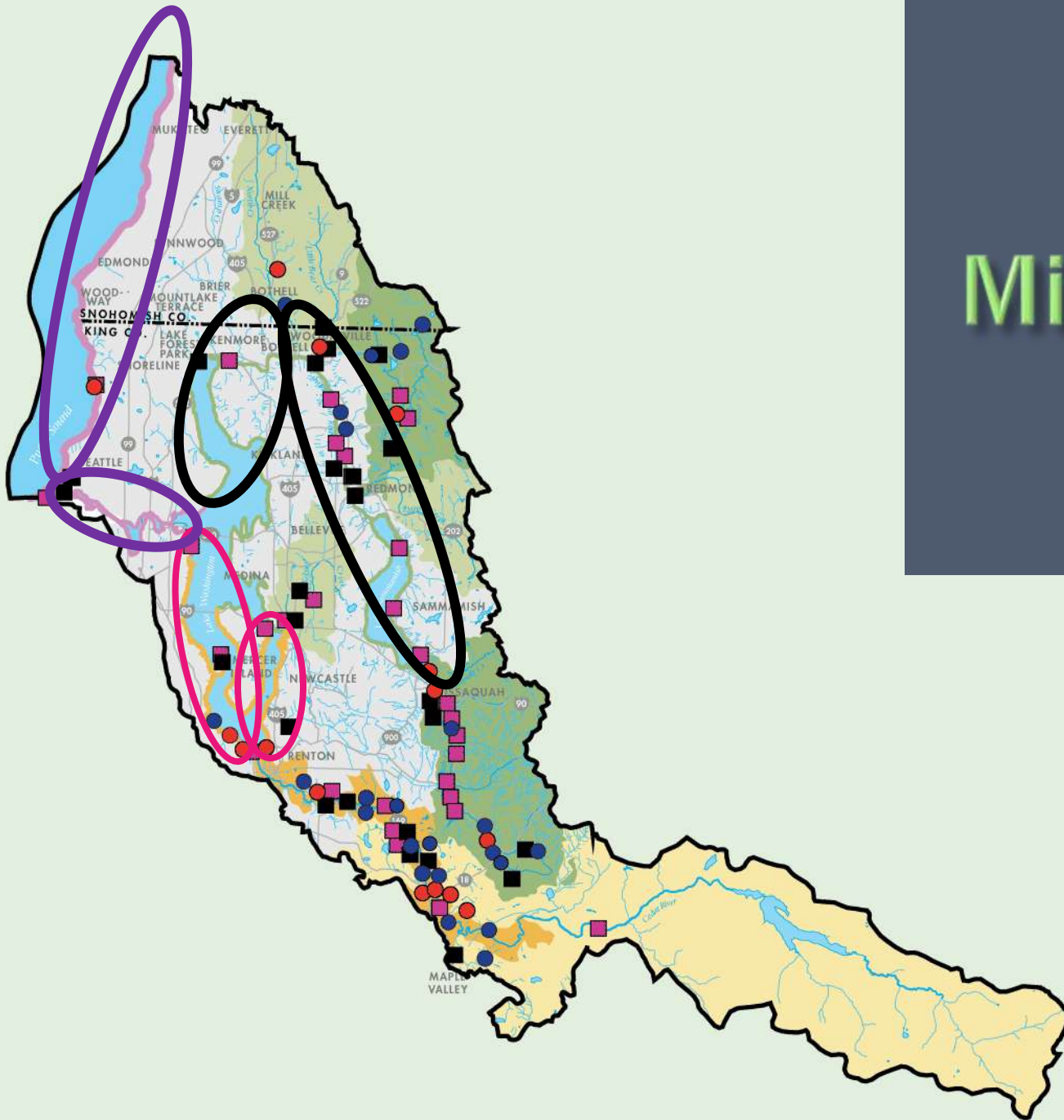
Cedar River



Cedar River – Belmondo Reach



Cedar River – Belmondo Reach



Migratory

Chinook Beach Park

Northern 350 feet
(at left) was
restored to create
natural shoreline.



Existing
southern 350
feet used by
juvenile
Chinook



Madrona Park – Shoreline cove at daylighted Madrona Creek mouth





Seward Park Shoreline Restoration



- Shallow Gravels

- Large Wood

- Native Vegetation



**Luther Burbank
Park - 1500 feet
Shoreline
Restoration**

Migratory Ship Canal & Nearshore



Migratory – Ship Canal & Nearshore Habitat Projects Measurements

- ▣ Restore Creek Mouths and Pocket Estuaries

Goal: 5

Completed: 0

- ▣ Habitat Protection

Goal: 0.3 acres

Completed: 0.3 acres

- ▣ Bank Softening

Goal: 150 ft.

Completed: 100 ft.

- ▣ Riparian Planting

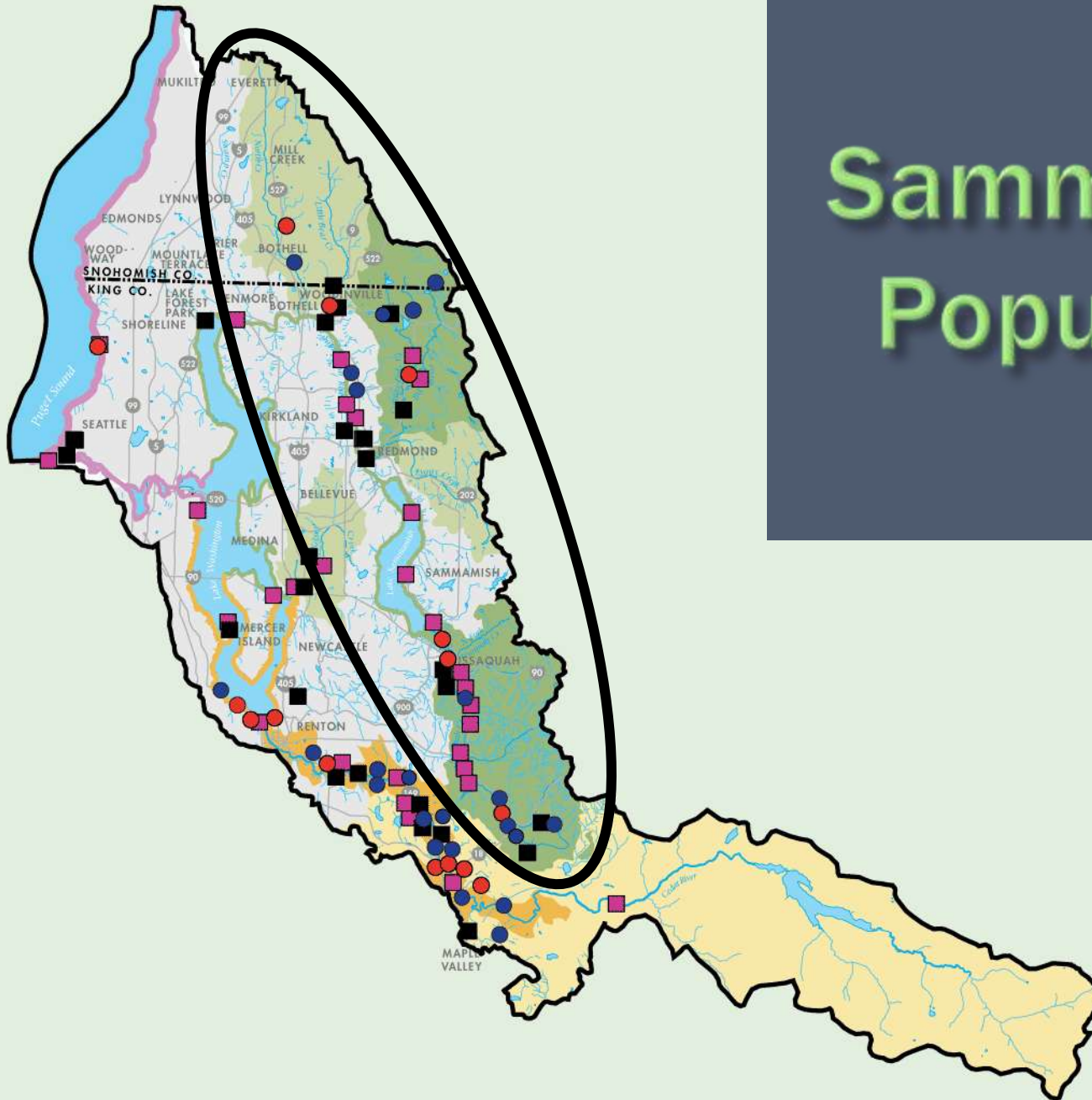
Goal: 0.3 acres

Completed: 0.3 acres

Salmon Bay Natural Area

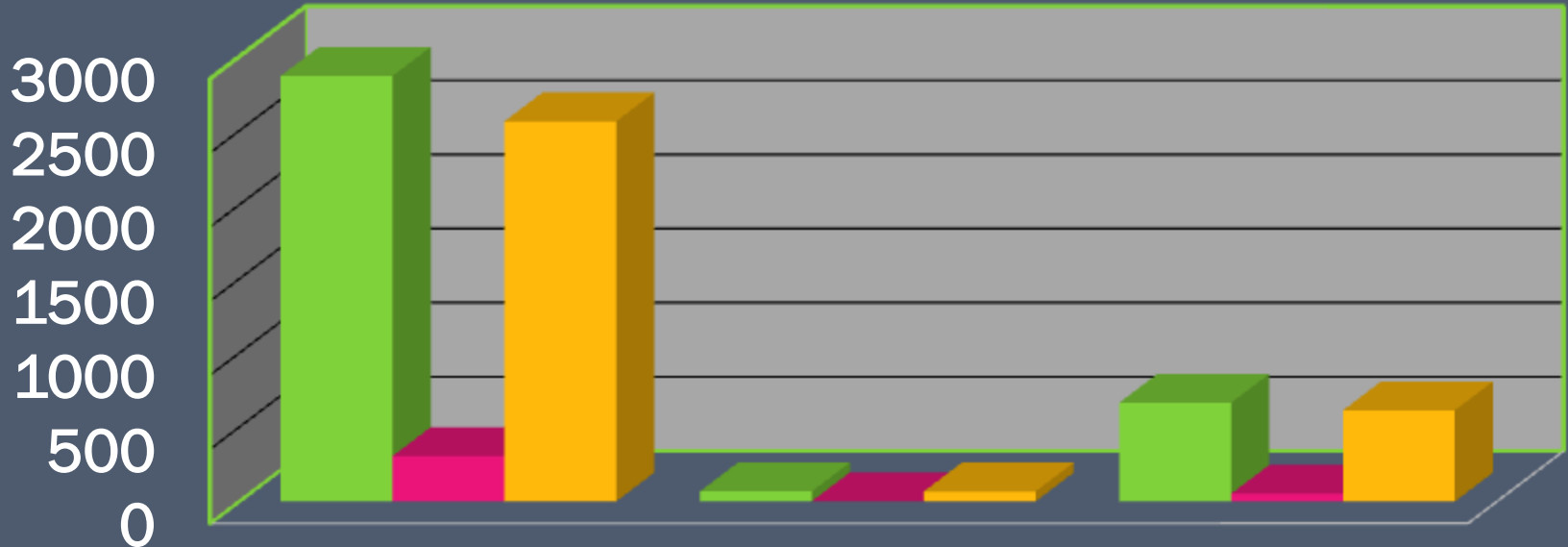


Sammamish Population



Sammamish Population Habitat Projects Measurements (1)

ACRES



Habitat
Protection

Restore
Wetlands

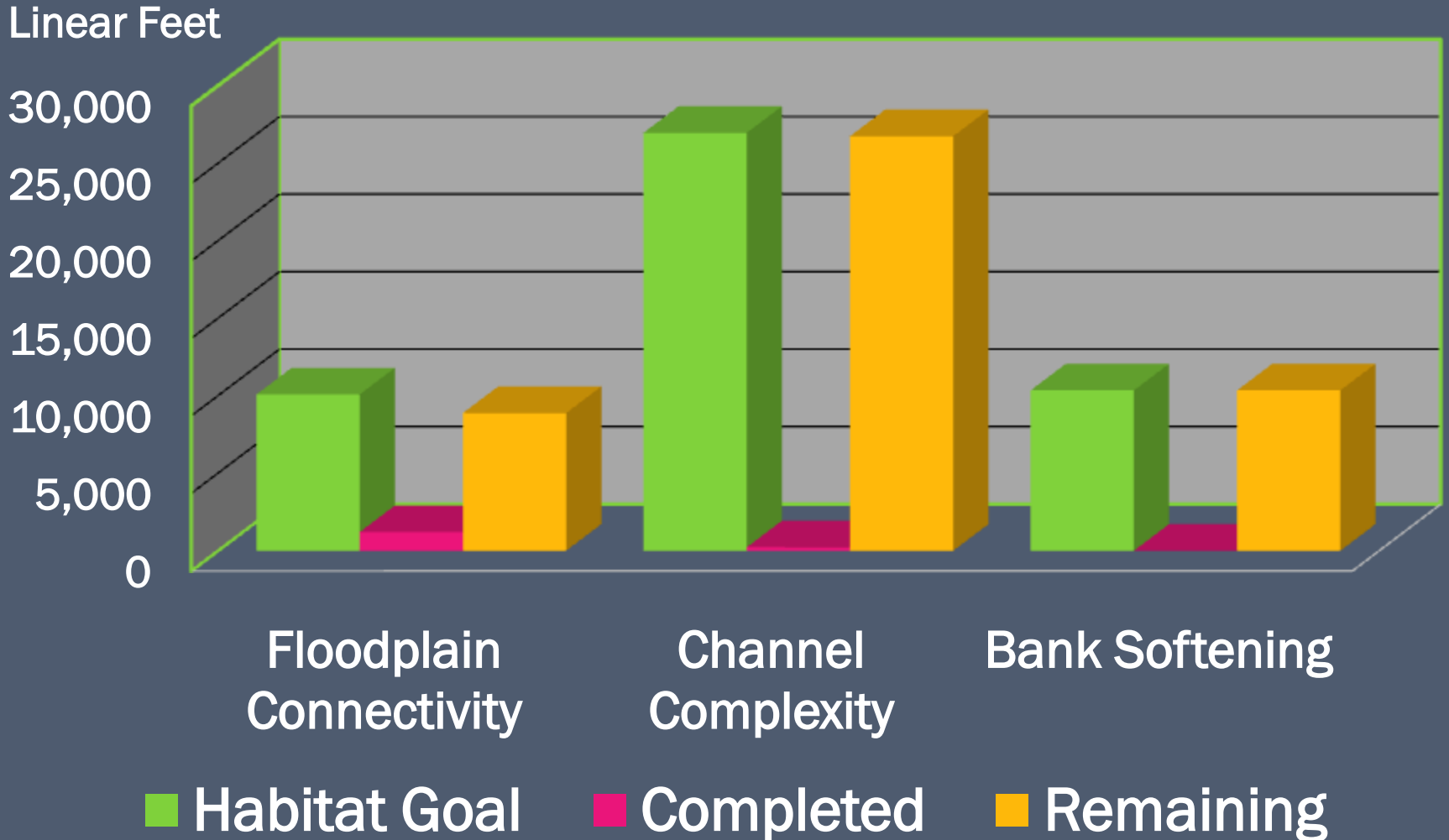
Riparian
Revegetation

■ Habitat Goal

■ Completed

■ Remaining

Sammamish Population Habitat Projects Measurements (2)

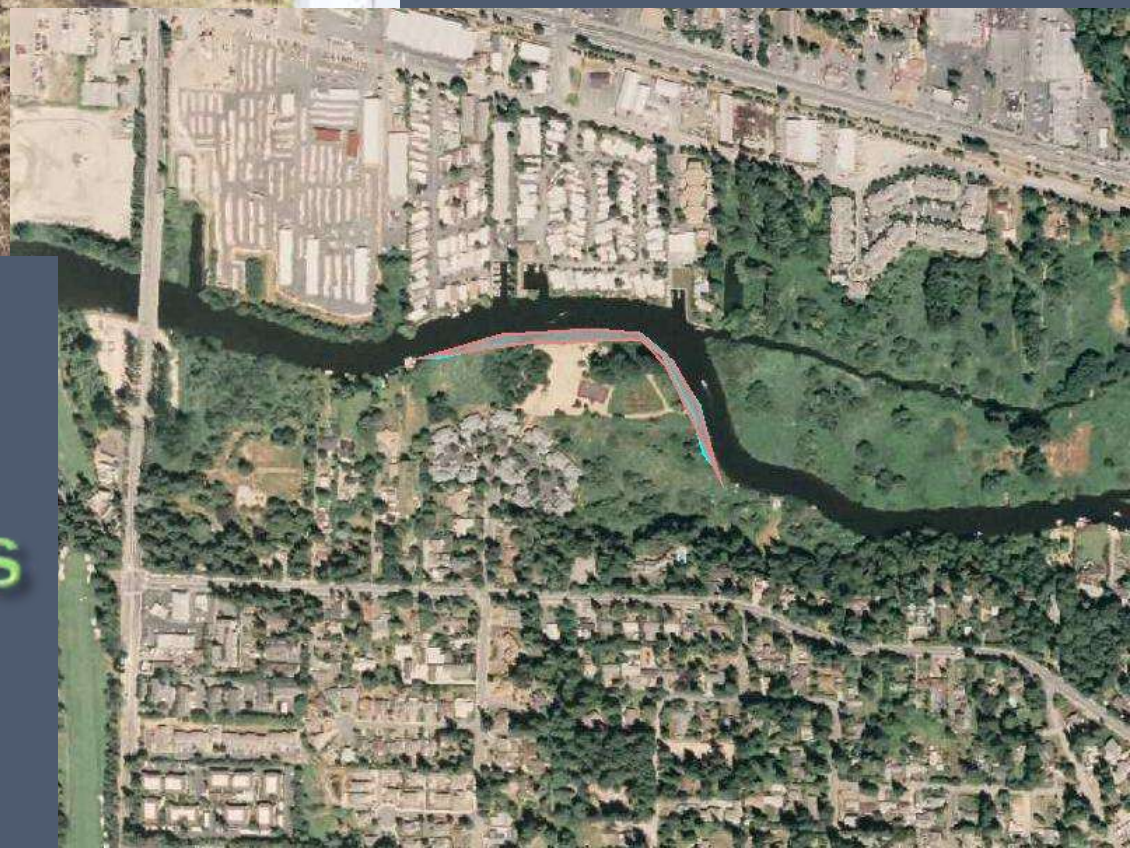




Expand Twin Creeks Project

Little Bear Creek Headwaters





Enhance and
Reconnect
Riparian Wetlands
at Wildcliffe
Shores



05.05.2006



10.25.2007

HEC – 4 Sammamish River Restoration

Length of
Creek to be
Daylighted

East Lake Sammamish Parkway

WETLAND
COMPLEX

Zacuse Creek Daylighting



Zacuse Creek

1998 Project
Area: Grade
Controls and
Habitat Work

Sammamish State Park Restoration at Mouth of Issaquah Creek



Sammamish State Park Restoration at Mouth of Issaquah Creek





Guano Acres Protection

Squak Valley Park Restoration



Next Steps

- ▣ Increase focus on projects in high priority reaches of the Cedar River
- ▣ Land acquired for restoration needs to move toward construction to provide salmon recovery benefit
- ▣ Refine priorities by geographic areas and identify /support key projects

145th Restoration Site Lower Bank - 2001



Lower Bank 145th Restoration Site - 2009



Celebrate Each Success!

Salmon recovery began in 1997
– and decades before.

We are moving toward salmon
recovery with each project.

Let's all continue the
excellent work!

Thank You

