

**CWM Funding
Agreement
for the
Snoqualmie
River Juvenile
Salmon Screw
Trap**

January 20, 2021



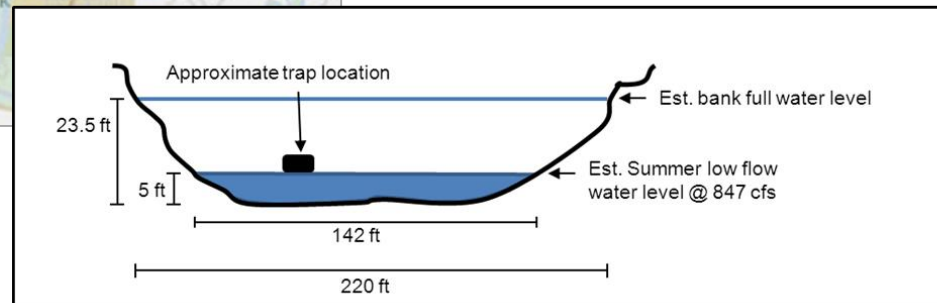
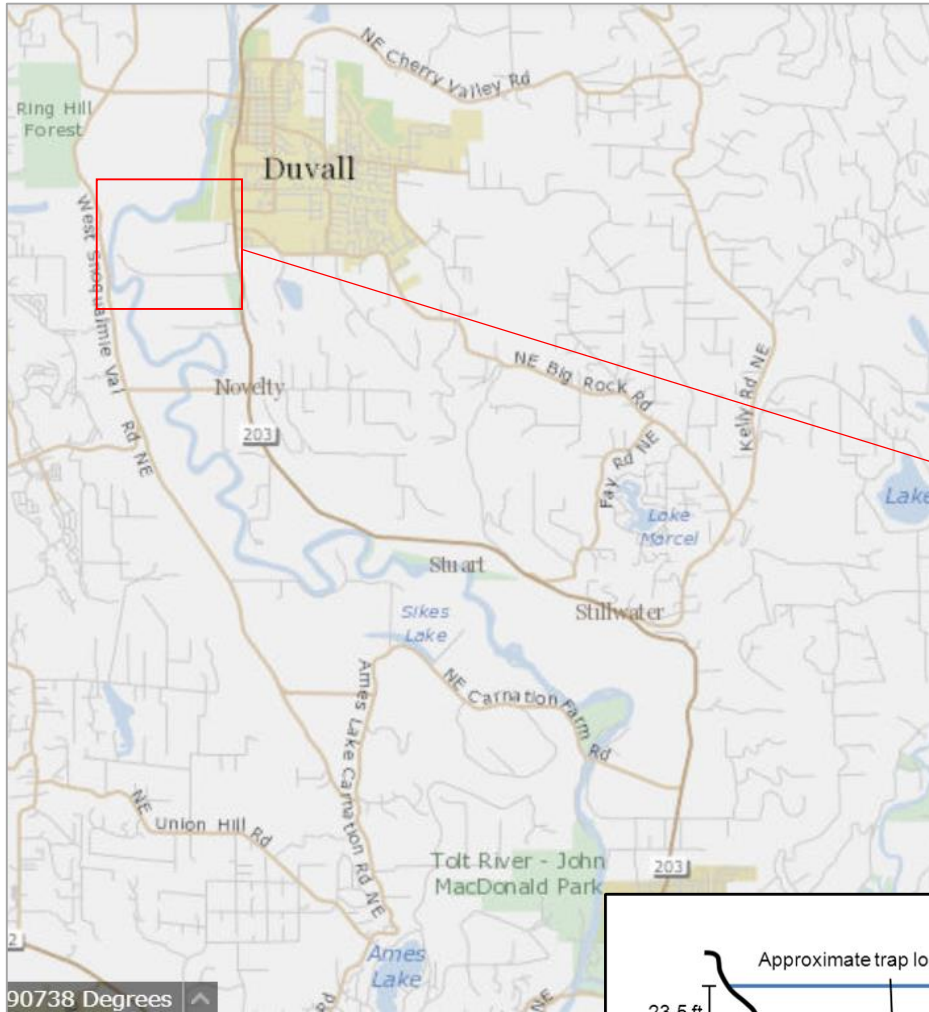
What is the screw trap?

- 26 foot aluminum pontoon barge
- Active since 2001; between Feb and June.
- All captured fish identified by species.
- Fork length measurements taken on 20 individuals for each species of salmonid in each size class (sub yearling, yearling) during each sampling interval (~every 12 hours).



Where is the screw trap?

- River Mile 12.2 on the Snoqualmie River
- Near Duvall, WA



Why is screw trap important?

- (1) Provides ongoing status, trends and abundance monitoring** needed to support run forecasting.
- (2) Key indicator of progress towards salmon recovery** in the Snohomish Basin.

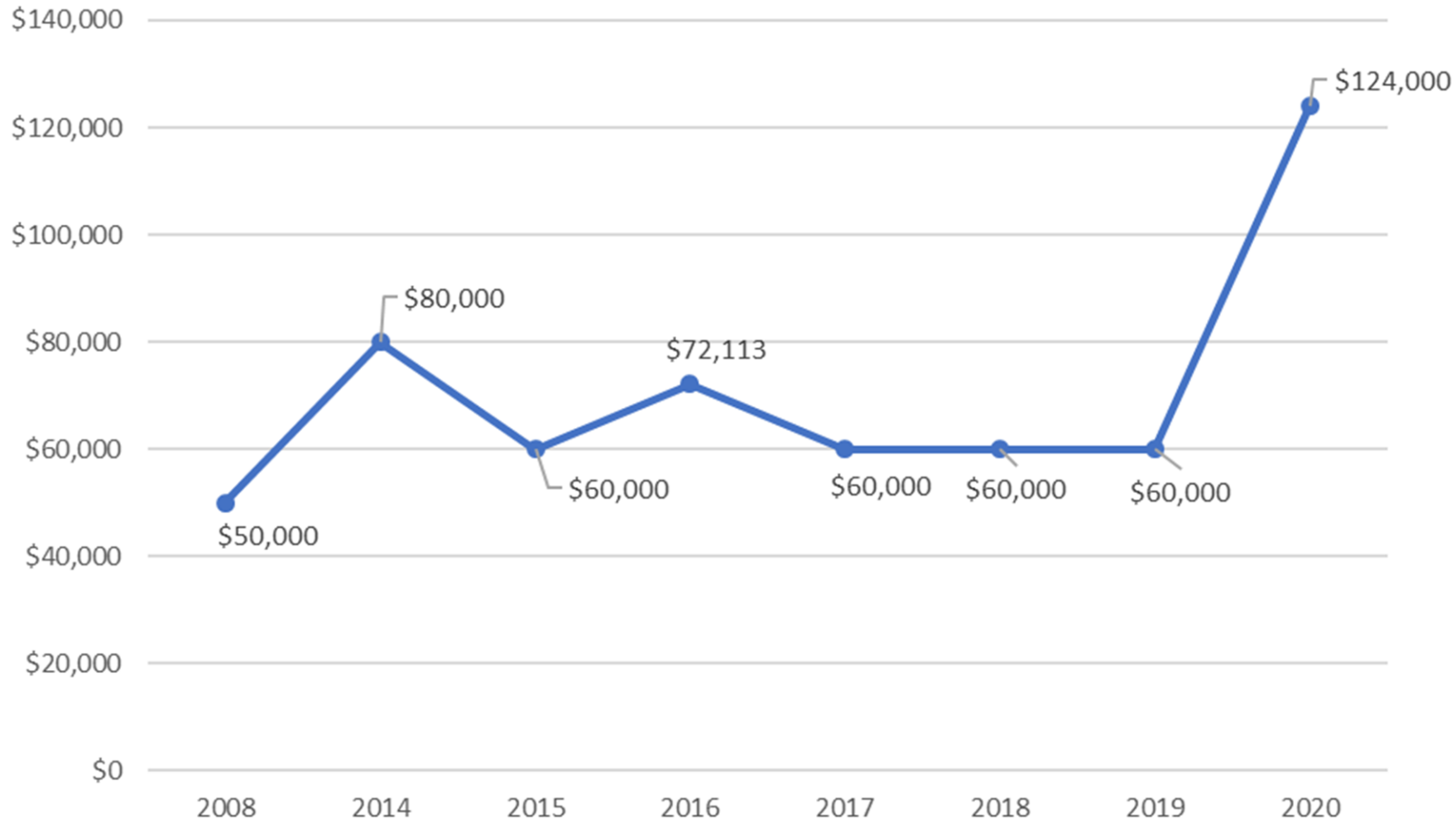


How has the screw trap been funded in the past?

- Since 2001, project has been **primarily funded by utilizing Pacific Coastal Salmon Recovery Funds (PCSRF)** from NOAA (amount is decreasing annually).
- **Prior funding received from:**
 - Bureau of Indian Affairs
 - City of Seattle
 - WDFW
 - Pacific Salmon Commission
 - Snohomish PUD



What role has the Forum played in funding the screw trap?



Total years = 8
Total awarded = \$566,113
Total requested = \$615,133
\$ leveraged (match) = \$403,904

What funding options might we explore?

Options to consider:

Option 1: Do not set aside dedicated funding, ask Tulalip Tribes to compete for the funding in the regular grant round.

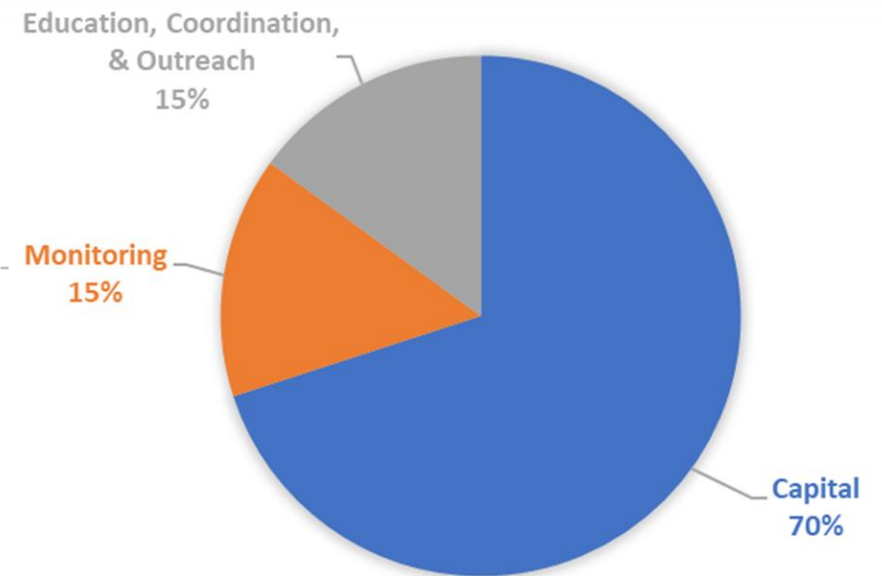
Option 2: Fund the screw trap at \$80,000 for 1 year, outside of the competitive CWM grant round.

Option 3: Fund the screw trap at \$80,000 for 3 years, outside the competitive CWM grant round.

What funding options might we explore?

2021 Option	Proposed dedicated funding	2021 CWM grant monitoring allocation*	Amount remaining in monitoring allocation for other monitoring projects
1	\$0.00	\$ 290,675	\$ 290,675
2 & 3	\$80,000	\$ 290,675	\$ 210,675

*monitoring is approximately 15% of total CWM funds



Notes: total FCD allocations for Snoqualmie CWM:

- 2021: \$1,937,833 (likely higher with returned funds)
- 2020: \$1,983,776 (included returned funds)
- 2019: \$1,065,431
- 2018: \$898,791
- 2017: \$872,286



Forum CWM Funding Guidance



1. Discussion

2. Decision needed:

What is our preferred funding option for the Snoqualmie River Juvenile Salmon Screw Trap?