

Map 22  
**MIDDLE FORK SNOQUALMIE RIVER** (170.5 MI<sup>2</sup>)  
 Snoqualmie Water Quality Synthesis Report

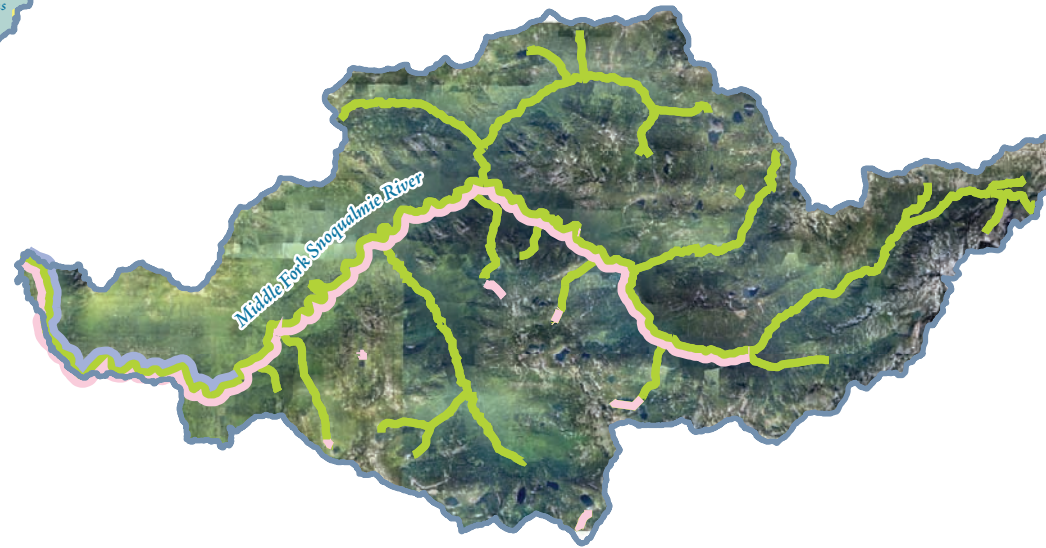


**LAND USE**

- Mt. Baker-Snoqualmie National Forest Boundary
- River/Major Stream
- Minor Watercourse
- Major Road
- Basin Boundary
- Lake/Reservoir
- Wetland

**Land Use Categories**

- Forestry
- Rural Residential—1 DU/2.5-10 acres
- Rural City UGA
- Agriculture



**FISH DISTRIBUTION**

- Rainbow Trout
- Mountain Whitefish
- Resident Cutthroat

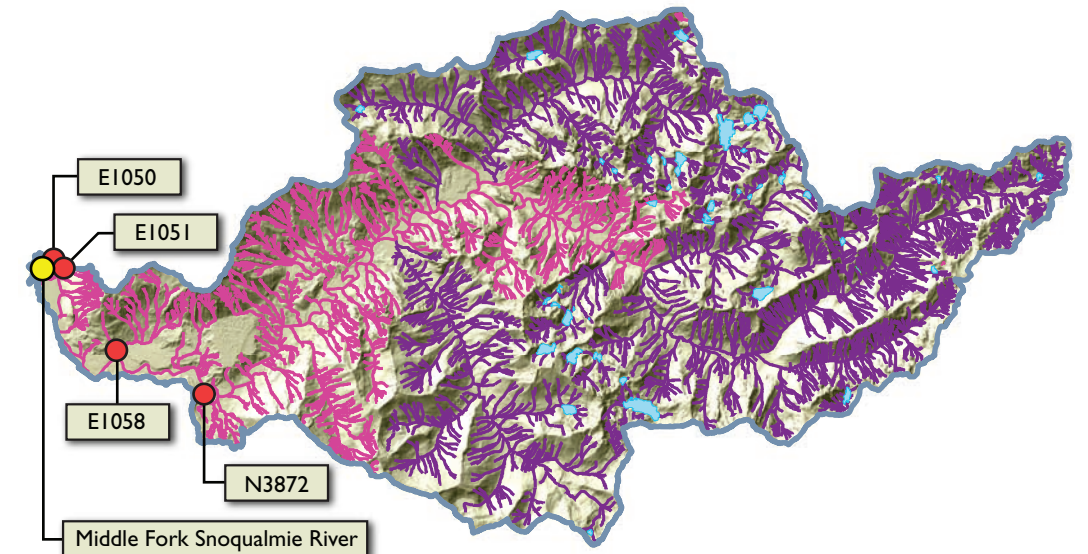
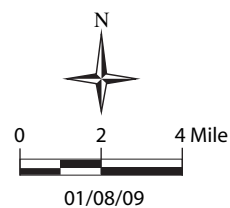
**SSHIAF Fish Distribution Data:** includes Documented, Presumed and Potential presence of each species according to the WDFW and NWIFC maintained database.

**Data Sources:** Standard King County datasets: TOPO\_WATERSHED, TOPO\_BASIN, WTRBDY\_CON, WTRBDY\_WET, MAJ\_STRM, WTRCRS, CITY, PLANT, MAJOR\_ROADS, TRIBAL\_LANDS, COMPLU, F61\_FUTLDUSE, DGM\_HILLSHADE, ORTHO.KC2007\_NAT\_050, ORTHO\_2005AEXP\_NAT, ORTHO\_2002KC\_NAT, SSHIAPW7-10\_15. Modified KC and external data in \\W\rbaf2\transfer\Everyone\Kajej\Water\_Quality\_Synthesis\ArcMap\_data: beneficialuses\_wria7, seasonal\_temperature\_w07x, ecysampling\_stations\_rev, snoq\_wq sample sites, kcswwgages, swaat sample sites\_3, wria7\_waterqualitysites, resident\_fish.

**Produced by:** DNRP/WLRD GIS, Visual Communications & Web Unit  
**VC File:** VC\GIS\Web Archives\0812\_SnoqWQ22\_MFsnoq.ai WGAB  
**GIS File:** \\W\rbaf2\transfer\Everyone\Kajej\Water\_Quality\_Synthesis\ArcMap projects\Water Quality Synthesis.mxd. Janne Kaje

The information included on this map has been compiled by staff from a variety of sources and is subject to change without notice. This map has been developed for planning purposes only. King County makes no representations or warranties, express or implied, as to accuracy, completeness, timeliness, or rights to the use of such information. King County shall not be liable for any general, special, indirect, incidental, or consequential damages including, but not limited to, lost revenues or lost profits resulting from the use or misuse of the information contained on this map. Any sale of this map or information on this map is prohibited except by written permission of King County.

Note: Overlapping sites and lines have been slightly offset for greater readability.



**WATER QUALITY STANDARDS AND DATA POINTS**

- Ecology TMDL Sites
- KCRMS Sites

**Beneficial Uses (Aquatic life, Recreation)**

- Char Spawning/Rearing (12° C), Extraordinary Primary Contact
- Core Summer Habitat (16° C), Extraordinary Primary Contact

