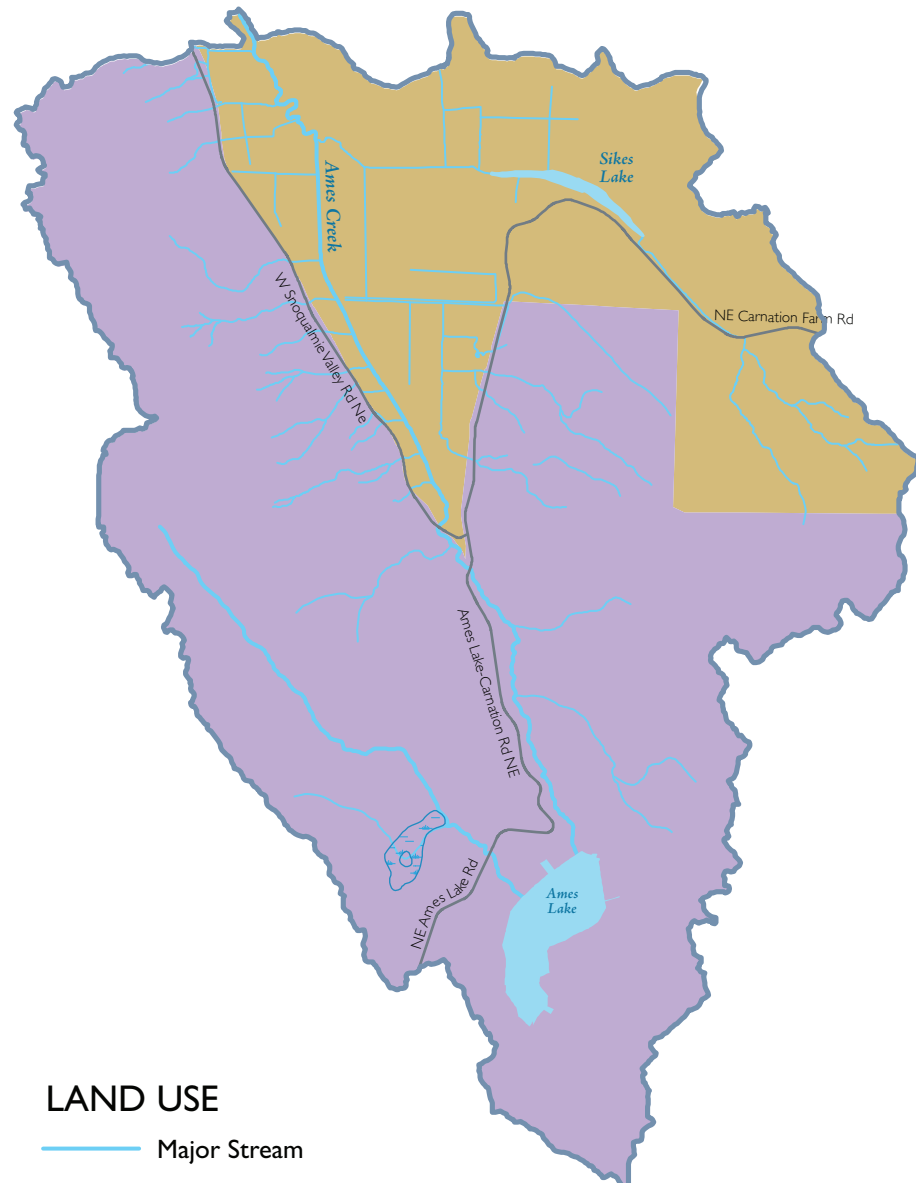


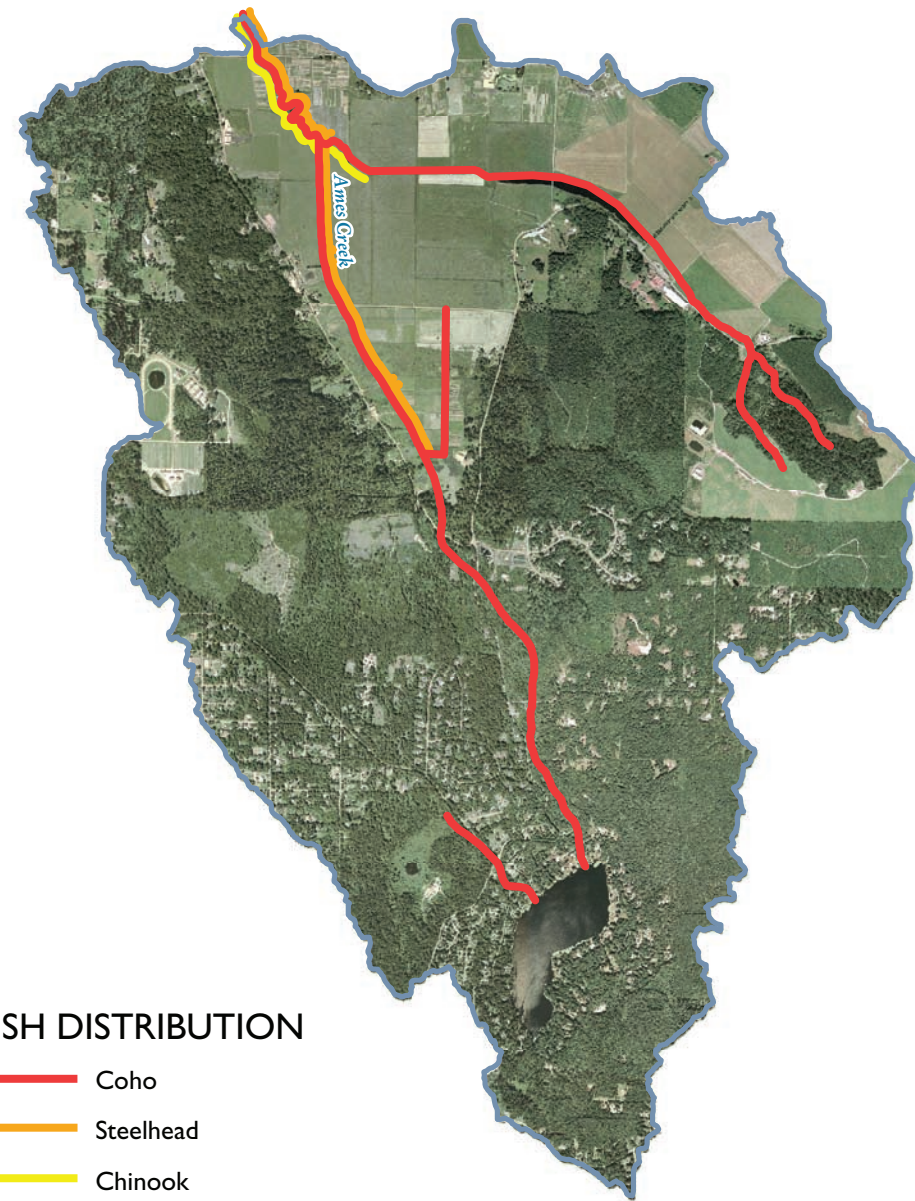
Map 13
AMES LAKE CREEK BASIN (8.1 MI²)
Snoqualmie Water Quality Synthesis Report



LAND USE

- Major Stream
- Minor Watercourse
- Major Road
- Basin Boundary
- Lake/Reservoir
- Wetland
- Agriculture
- Rural Residential (1 DU/2.5-10 acres)

Note: King and Snohomish County land use categories have been aggregated for greater clarity.



FISH DISTRIBUTION

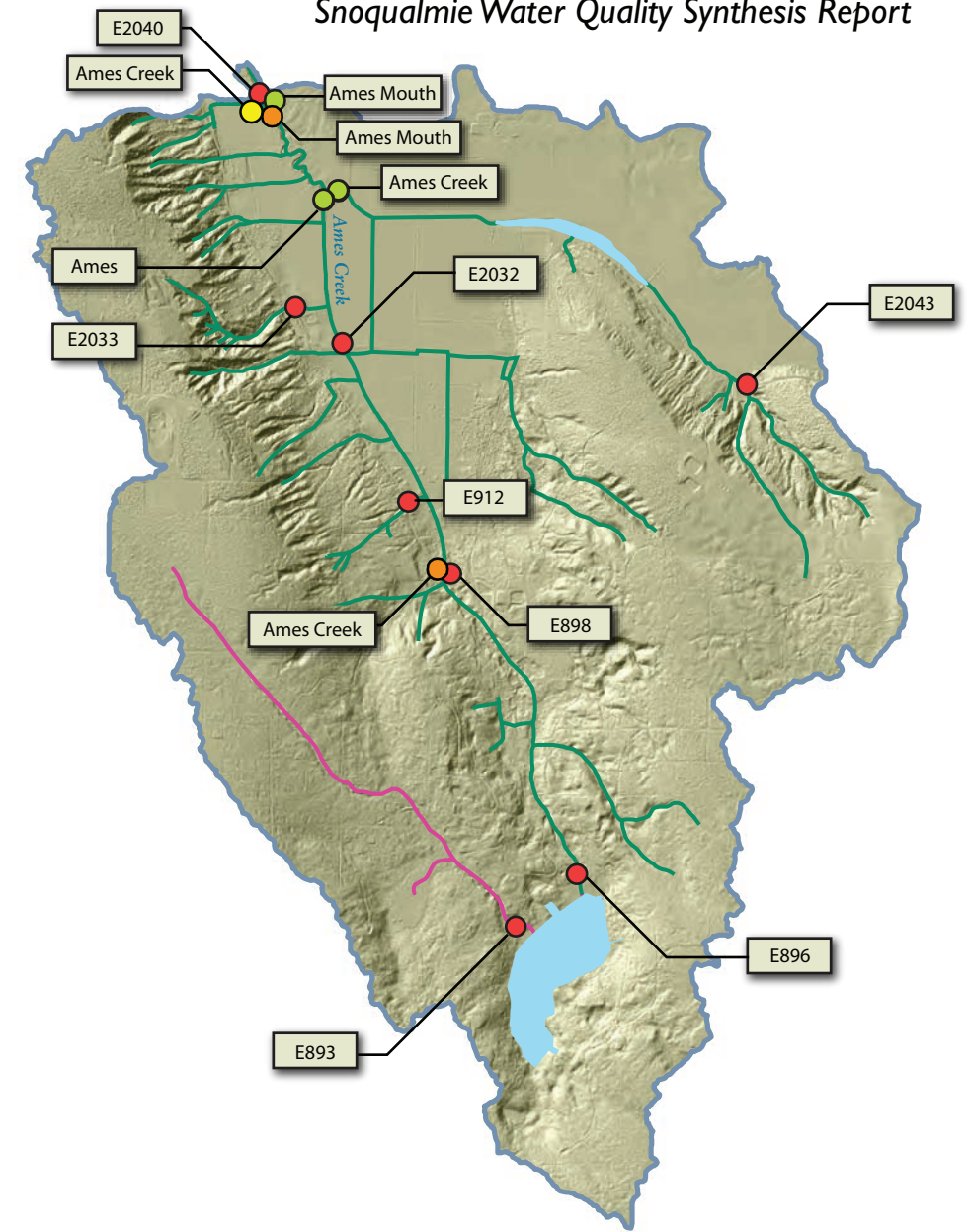
- Coho
- Steelhead
- Chinook

SSHIAF Fish Distribution Data:
 includes Documented, Presumed and Potential presence of each species according to the WDFW and NWIFC maintained database.

Data Sources: Standard King County datasets: TOPO_WATERSHED, TOPO_BASIN, WTRBDY_CON, WTRBDY_WET, MAJ_STRM, WTRCRS, CITY, PLANT, MAJOR_ROADS, TRIBAL_LANDS, COMPLU, F61_FUTLDUSE, DGM_HILLSHADE, ORTHO.KC2007_NAT_050, ORTHO_2005AEXP_NAT, ORTHO_2002KC_NAT, SSHIAFPW7-10_15. Modified KC and external data in \\Wlrbafs2\transfer\Everyone\Kaje\Water_Quality_Synthesis\ArcMap_data\beneficialuses_wria7_seasonal_temperature_w07x_ecysampling_stations_rev_snoq_wq_sample_sites_kcswmgages_swaat_sample_sites_3_wria7_waterqualitysites_resident_fish.

Produced by: DNRP/WLRD GIS, Visual Communications & Web Unit
VC File: VC\GIS\Web Archives\0812_SnoqWQ13_Ames.ai LPRE
GIS File: \\Wlrbafs2\transfer\Everyone\Kaje\Water_Quality_Synthesis\ArcMap projects\Water Quality Synthesis.mxd. Janne Kaje

The information included on this map has been compiled by staff from a variety of sources and is subject to change without notice. This map has been developed for planning purposes only. King County makes no representations or warranties, express or implied, as to accuracy, completeness, timeliness, or rights to the use of such information. King County shall not be liable for any general, special, indirect, incidental, or consequential damages including, but not limited to, lost revenues or lost profits resulting from the use or misuse of the information contained on this map. Any sale of this map or information on this map is prohibited except by written permission of King County.



WATER QUALITY STANDARDS AND DATA POINTS

- Ecology TMDL Site
- King County (2007) Site
- King County (2005) Site
- KCRMS Site

Note: Overlapping sites and lines have been slightly offset for greater readability.

Beneficial Uses (Aquatic life, Recreation)

- Core Summer Habitat (16° C), Extraordinary Primary Contact
- Spawning/Rearing (17.5° C), Primary Contact

