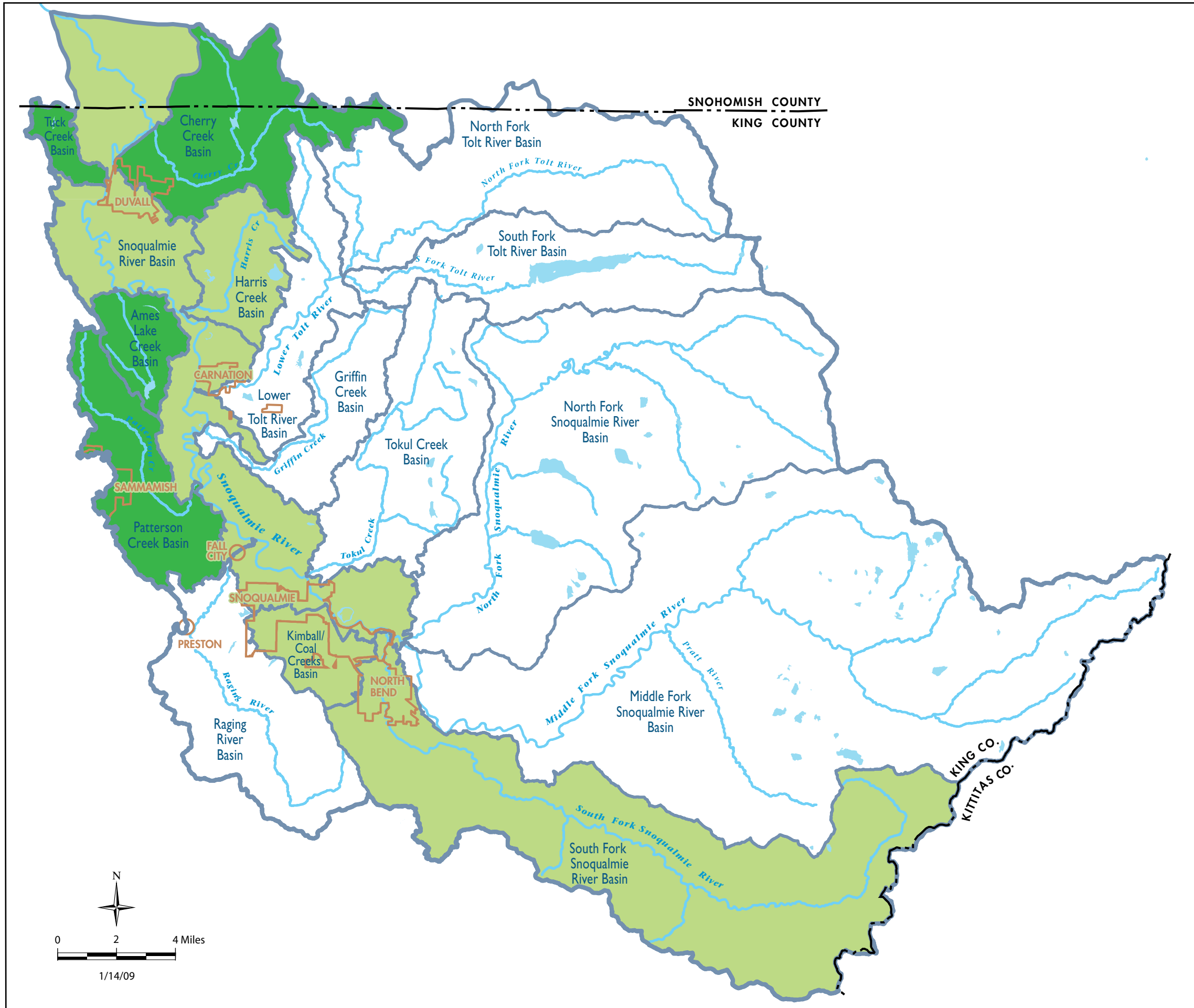


Map 10  
**NUTRIENT IMPAIRMENT**  
*Snoqualmie Water Quality Synthesis Report*



- Major Streams
- County Boundary
- Subbasin Boundary
- Watershed Boundary
- Incorporated Area Boundary
- Lakes and Reservoirs

- Nutrients**
- Impaired
  - Basin of Concern
  - Not Impaired

**NOTES:**  
 These ratings are qualitative and must be considered in conjunction with the text of the report. In many cases, only a portion of a sub-basin is impaired. Also, many types of impairment are seasonal in nature. Definitions:

**Impaired:** Sub-basin is on the 303(d) list for this parameter and/or professional field studies suggest that parameter fails to meet standards.

**Basin of Concern:** Evidence from professional field studies suggests occasional or minor deviations from State standards.

**Not impaired:** Professional field studies show that State standards are met, or that excursions are extremely minor and infrequent.

**No data:** Insufficient data to rate sub-basin.

**Data Sources:** Standard King County datasets TOPO\_WATERSHED, WASHCO, WTRBDY\_CON, MAJ\_STRM, CITY. Modified King County data in \\Wlrba2\transfer\Everyone\Kaje\Water\_Quality\_Synthesis\ArcMap\_data: TOPO\_BASIN\_SNOQUALMIE

**Produced by:** DNRP/WLRD GIS, Visual Communications & Web Unit  
**VC File:** VC/GIS/Web Archives/0812\_SnoqWQ10\_Nutrients.ai LPRE  
**GIS File:** \\Wlrba2\transfer\Everyone\Kaje\Water\_Quality\_Synthesis\ArcMap projects\Maps5-10\_Subbasin\_WQ\_ratings.mxd Janne Kaje

The information included on this map has been compiled by staff from a variety of sources and is subject to change without notice. This map has been developed for planning purposes only. King County makes no representations or warranties, express or implied, as to accuracy, completeness, timeliness, or rights to the use of such information. King County shall not be liable for any general, special, indirect, incidental, or consequential damages including, but not limited to, lost revenues or lost profits resulting from the use or misuse of the information contained on this map. Any sale of this map or information on this map is prohibited except by written permission of King County.